

SECTION 009113 – ADDENDUM TWO

PART 1 - ADDENDA

1.1 PROJECT INFORMATION

- A. Project Name: 22034.08 Meridian High School Parking and Site.
- B. Owner: Meridian Public School District, 1019 25th Avenue, Meridian, MS 38391
- C. Architect: Dale | Bailey, an Association, One Jackson Place, Suite 250, 188 East Capitol Street, Jackson, MS 39201-2100
- D. Architect Project Number: 22034.02
- E. Date of Addendum Two: 14 March 2024



1.2 NOTICE TO BIDDERS

- A. This Addendum is issued to all registered plan holders pursuant to the Instructions to Bidders and Conditions of the Contract. This Addendum serves to clarify, revise, and supersede information in the Project Manual, Drawings, and previously issued Addenda. Portions of the Addendum affecting the Contract Documents will be incorporated into the Contract by enumeration of the Addendum in the Owner/Contractor Agreement.
- B. The Bidder shall acknowledge receipt of this Addendum in the appropriate space on the Bid Form.
- C. The date for receipt of bids is UNCHANGED by this Addendum at same location.
 - 1. The bid date is March 18, 2024, at 2:30 pm.

1.3 REVISIONS TO DRAWINGS

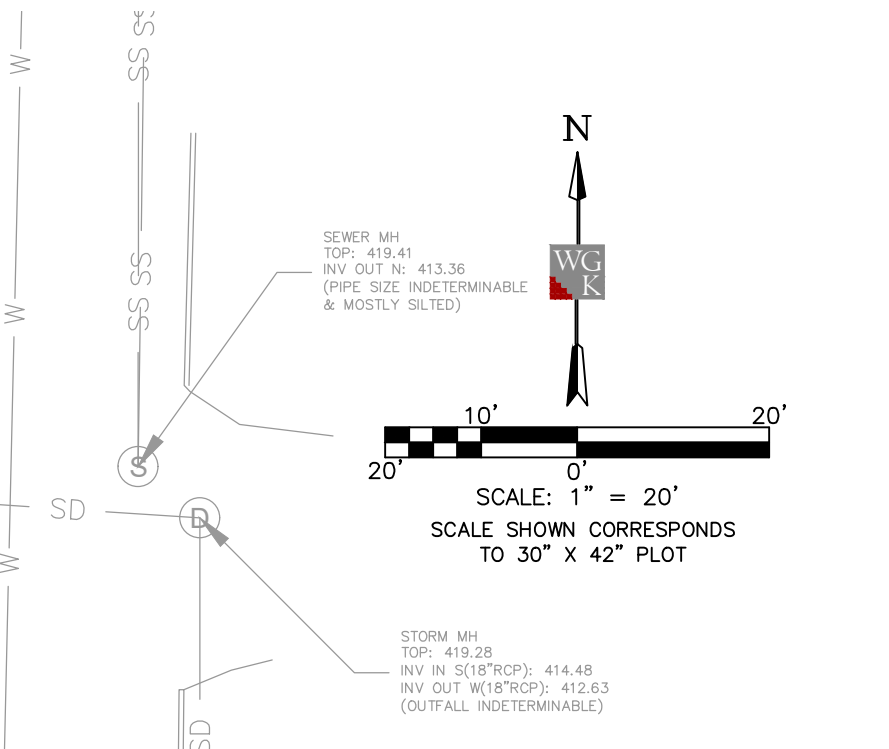
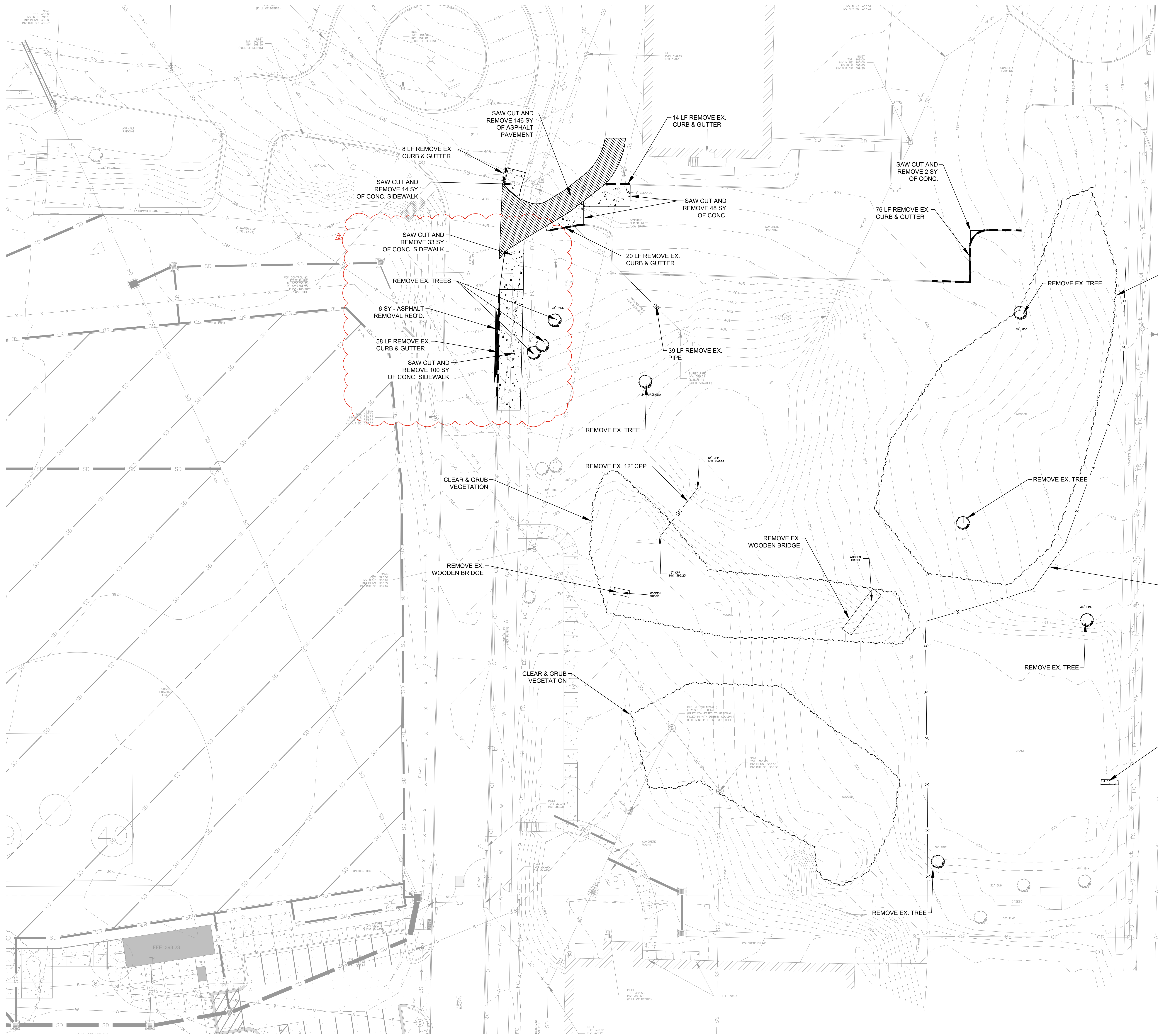
- A. Sheet C-100 – Demolition Plan (Revised). Delete this sheet in its entirety and replace it with the attached. Added additional sidewalk/asphalt demo.
- B. Sheet C-200 – Grading & Drainage Plan (Revised). Delete this sheet in its entirety and replace it with the attached. Revised grading in highlighted area.
- C. Sheet C-300 – Site Plan (Revised). Delete this sheet in its entirety and replace it with the attached. Revised detectable warning panel location, added additional sidewalk, changed color of crosswalk striping.
- D. Sheet C-400 – Joint Layout Plan (Revised). Delete this sheet in its entirety and replace it with the attached. Revised joint layout in highlighted area.

- E. Sheet C-600 – Erosion Control Plan (Revised). Delete this sheet in its entirety and replace it with the attached. Added sod scope to permanent erosion control.

1.4 ATTACHMENTS

- A. Sheet C-100 – Demolition Plan dated 13 March 2024.
- B. Sheet C-200 – Grading & Drainage Plan dated 13 March 2024.
- C. Sheet C-300 – Site Plan dated 13 March 2024.
- D. Sheet C-400 – Joint Layout Plan dated 13 March 2024.
- E. Sheet C-600 – Erosion Control Plan dated 13 March 2024.

END OF ADDENDUM TWO



DALE BAILEY
AN ASSOCIATION

Architects

One Jackson Place 250
188 East Capitol Street
Jackson, MS 39201
p 601.352.5411

201 Park Court Suite B
Ridgeland, MS 39157
p 601.790.9432

161 Lameuse St. Suite 201
Biloxi, MS 39530
p 228.374.1409

dalebaileyplans.com



22034.08 MHS Parking and Site

2320 32nd St, Meridian, MS 39305

Construction Documents

Project No 22034.02
Date 02/13/2024
Drawn JB
Checked BLM
Revision # Date
03/13/2024

NOTES:
CONTRACTOR TO REMOVE EX. VEGETATION ONLY AS NECESSARY TO ACHIEVE GRADES.

WG K
ENGINEERS & SURVEYORS

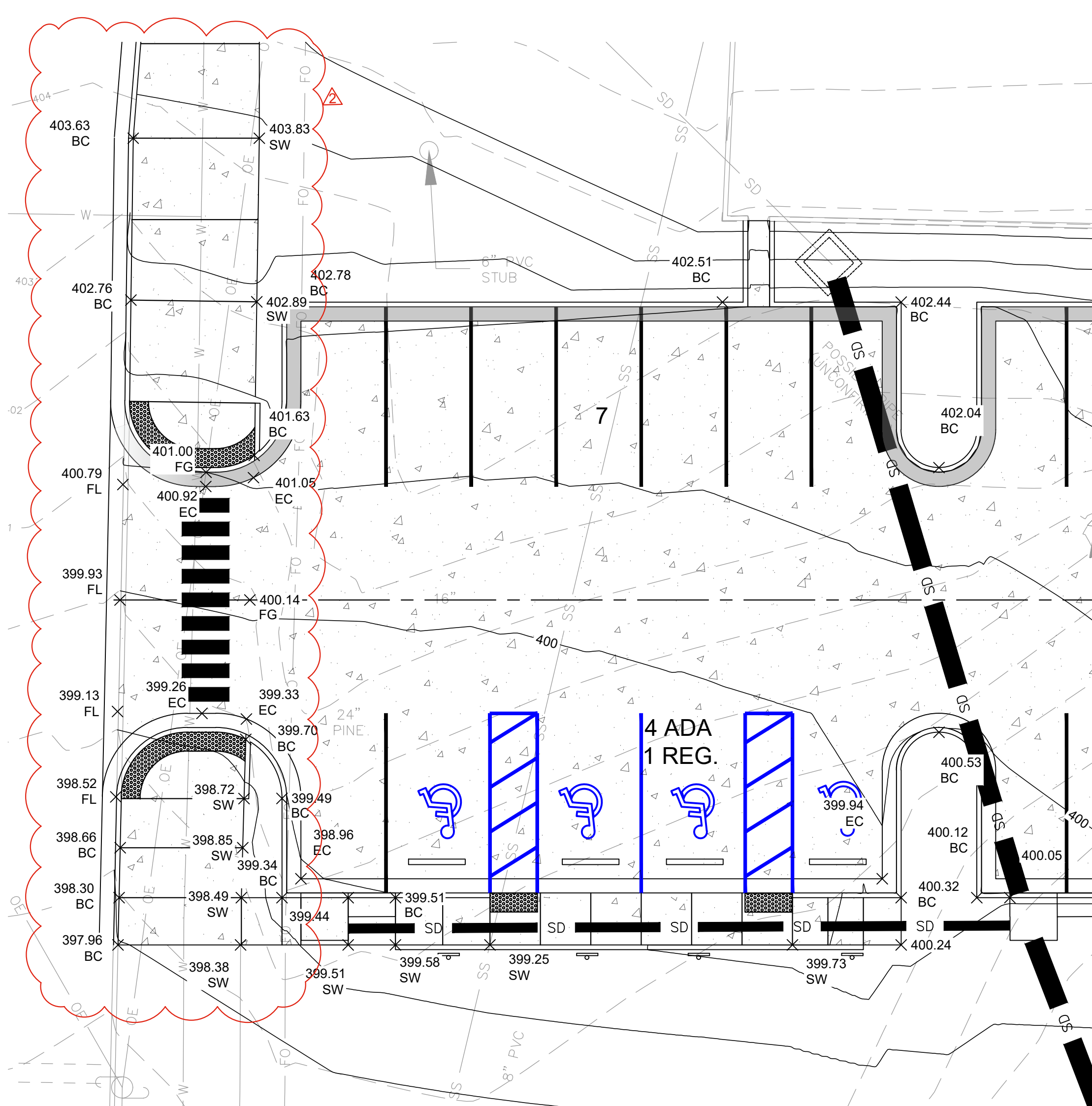
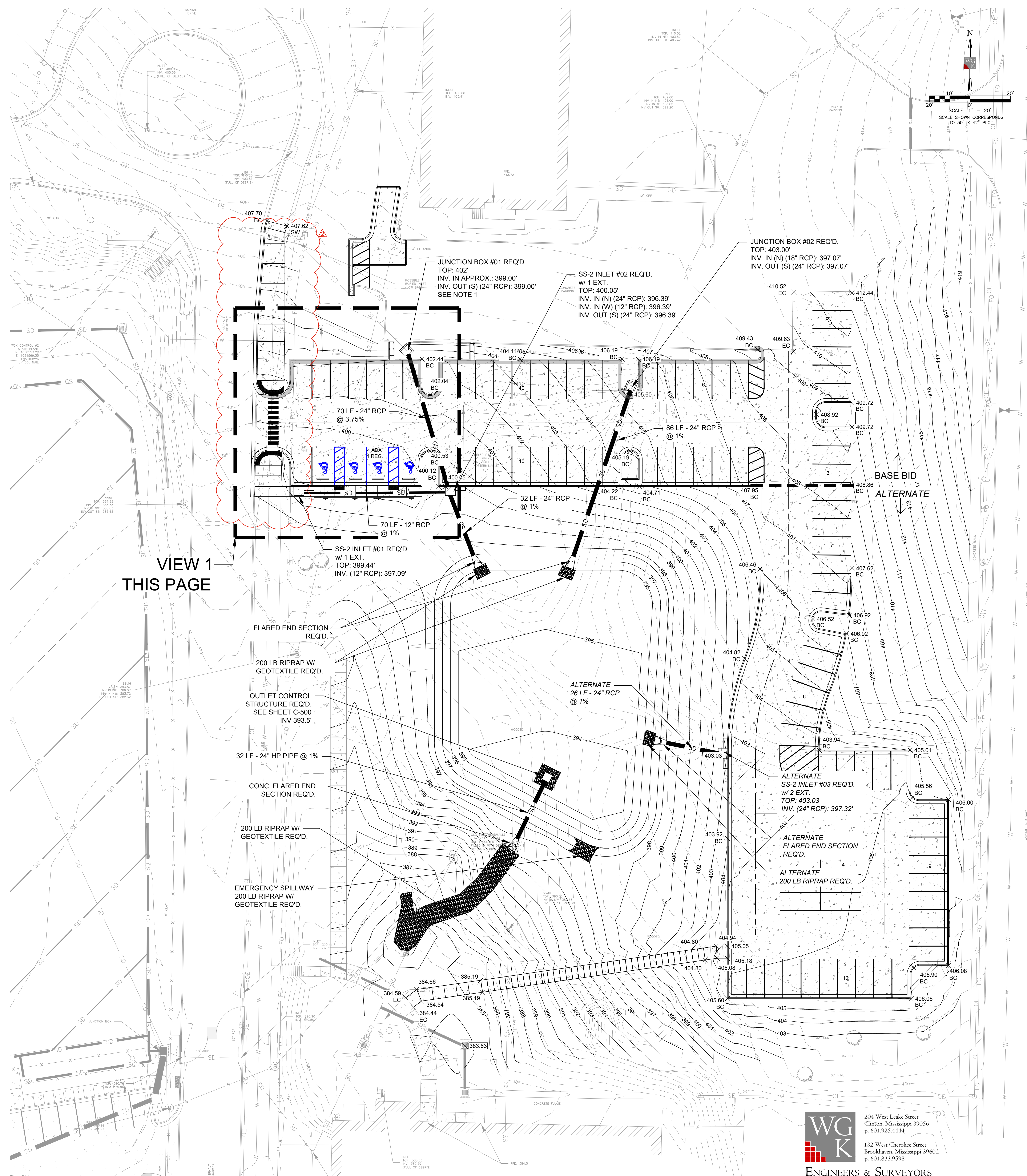
204 West Lake Street
Clinton, Mississippi 39056
p. 601.925.4444

132 West Cherokee Street
Brookhaven, Mississippi 39601
p. 601.833.9598

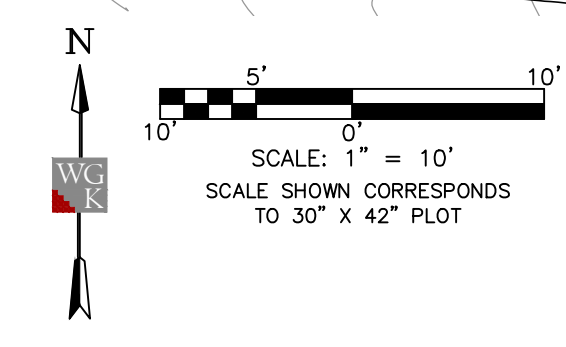
C-100
Demolition Plan

NOTES:

1. CONTRACTOR TO VERIFY EXISTING PIPE INVERT/LOCATION BEFORE ORDERING THIS JUNCTION BOX AND COMMUNICATE TO THE ENGINEER WHAT IS FOUND IN THE FIELD.
2. ALL SS-2 INLET TOPS SHALL BE POURED IN PLACE AND NOT PRECAST.



VIEW 1



DALE BAILEY
AN ASSOCIATION

Architects

One Jackson Place 250
188 East Capitol Street
Jackson, MS 39201
p 601.352.5411

201 Park Court Suite B
Ridgeland, MS 39157
p 601.790.9432

161 Lameuse St. Suite 201
Biloxi, MS 39530
p 228.374.1409

dalebaileyplans.com



22034.08 MHS Parking and Site
2320 32nd St, Meridian, MS 39305

Construction Documents

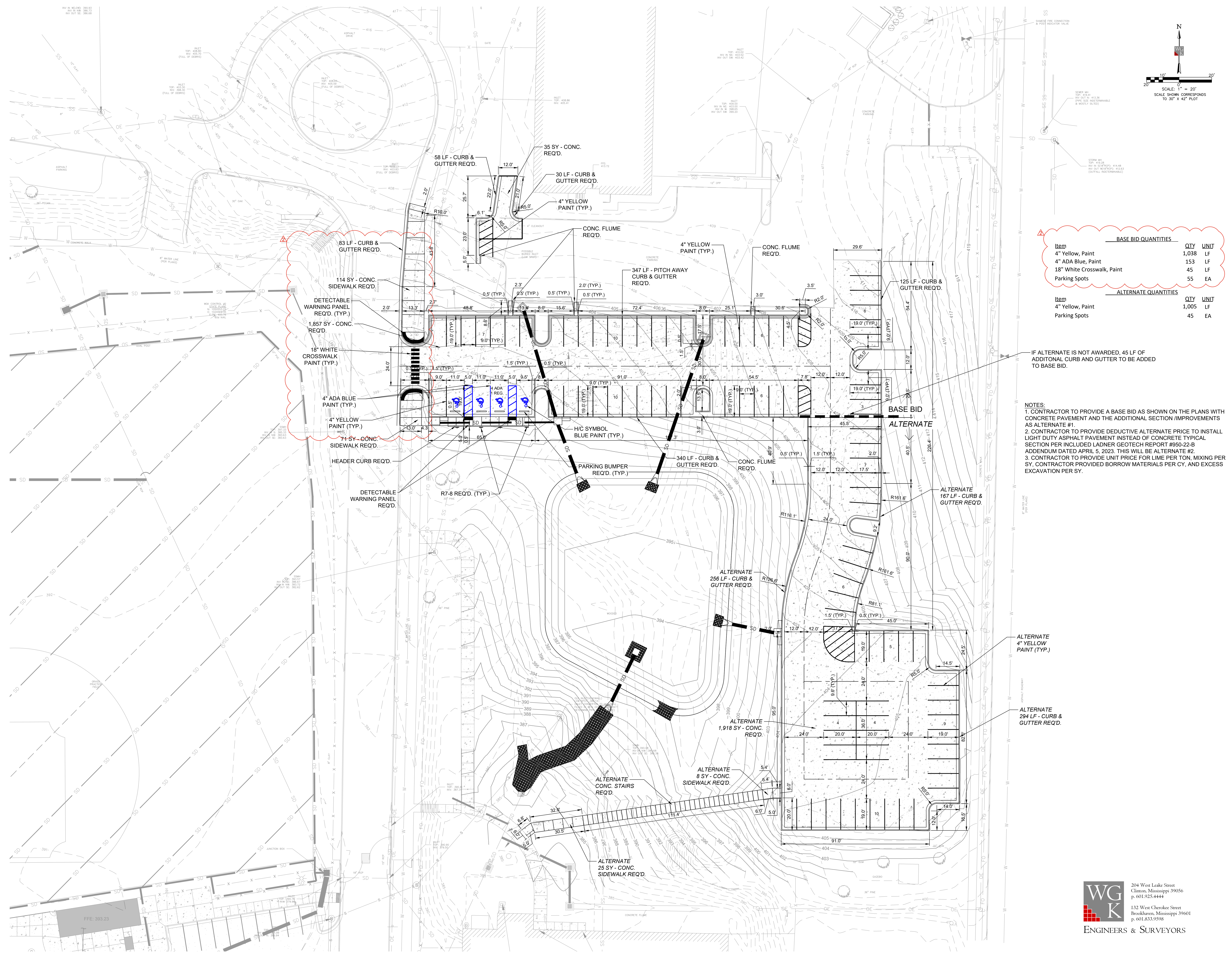
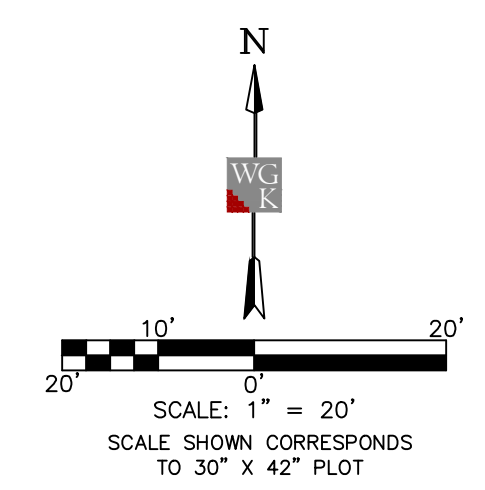
Project No	22034.02
Date	02/13/2024
Drawn	JB
Checked	BLM
Revision #	Date
1	03/13/2024

WGK
ENGINEERS & SURVEYORS

204 West Leake Street
Clinton, Mississippi 39056
p. 601.925.4444

132 West Cherokee Street
Brookhaven, Mississippi 39601
p. 601.833.9598

C-200
Grading & Drainage Plan



BASE BID QUANTITIES			
Item	QTY	UNIT	
4" Yellow, Paint	1,038	LF	
4" ADA Blue, Paint	153	LF	
18" White Crosswalk, Paint	45	LF	
Parking Spots	55	EA	

ALTERNATE QUANTITIES			
Item	QTY	UNIT	
4" Yellow, Paint	1,005	LF	
Parking Spots	45	EA	

IF ALTERNATE IS NOT AWARDED, 45 LF OF ADDITIONAL CURB AND GUTTER TO BE ADDED TO BASE BID.

- NOTES:
- CONTRACTOR TO PROVIDE A BASE BID AS SHOWN ON THE PLANS WITH CONCRETE PAVEMENT AND THE ADDITIONAL SECTION/IMPROVEMENTS AS ALTERNATE #1.
 - CONTRACTOR TO PROVIDE DEDUCTIVE ALTERNATE PRICE TO INSTALL LIGHT DUTY ASPHALT PAVEMENT INSTEAD OF CONCRETE TYPICAL SECTION PER INCLUDED LADNER GEOTECH REPORT #950-22-B ADDENDUM DATED APRIL 5, 2023. THIS WILL BE ALTERNATE #2.
 - CONTRACTOR TO PROVIDE UNIT PRICE FOR LIME PER TON, MIXING PER SY, CONTRACTOR PROVIDED BORROW MATERIALS PER CY, AND EXCESS EXCAVATION PER SY.

22034.08 MHS Parking and Site
2320 32nd St, Meridian, MS 39305

Construction Documents

Project No	22034.02
Date	02/13/2024
Drawn	JB
Checked	BLM
Revision #	Date
1	03/13/2024

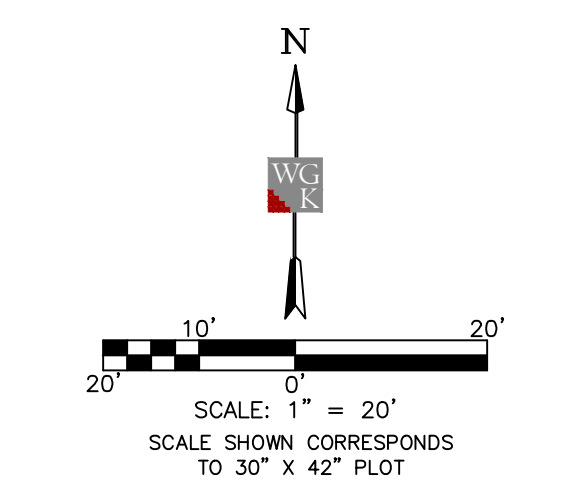
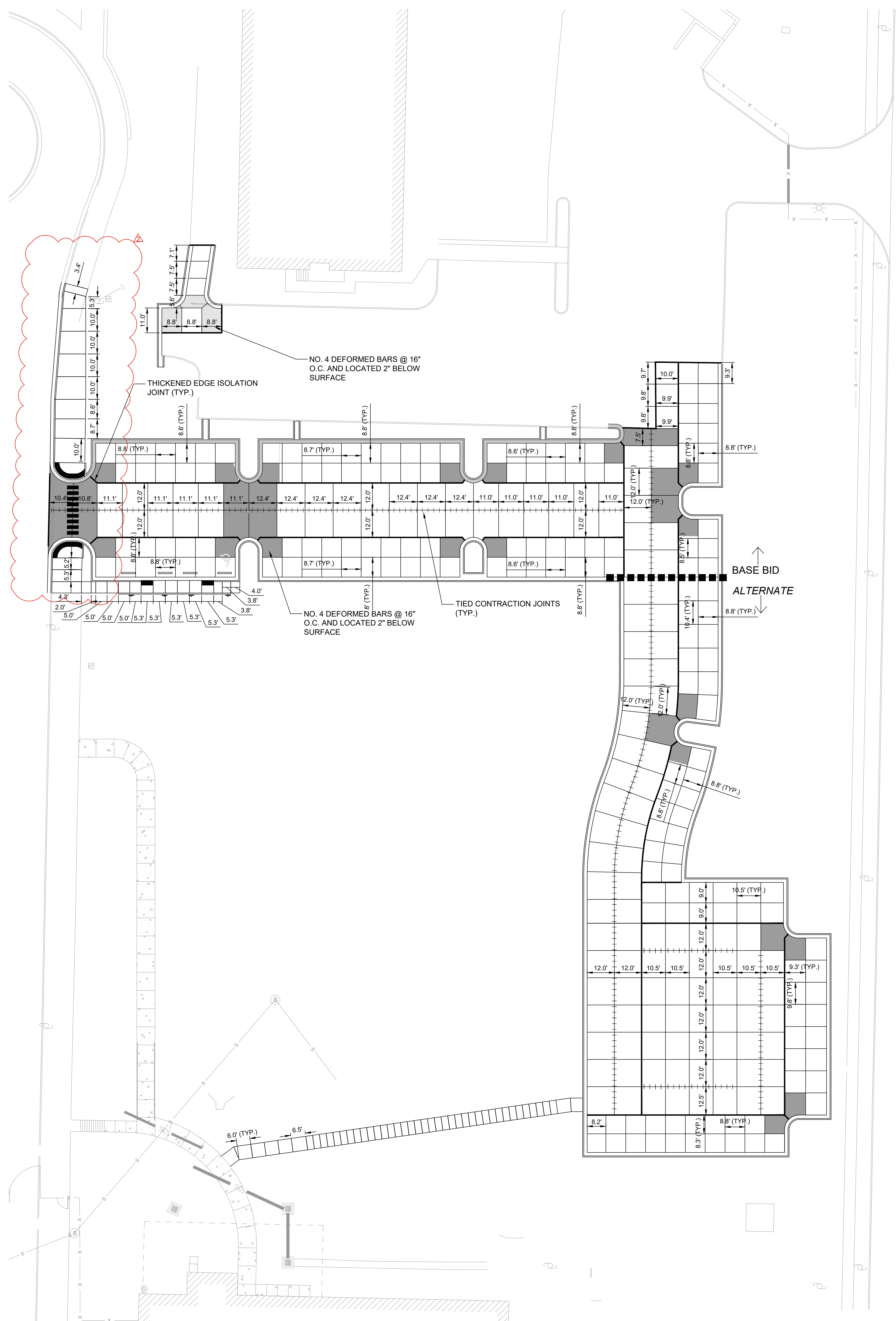
WG K
ENGINEERS & SURVEYORS

204 West Leake Street
Clinton, Mississippi 39056
p. 601.925.4444

132 West Cherokee Street
Brookhaven, Mississippi 39601
p. 601.833.9598

CONCRETE NOTES:

1. Criteria for concrete materials:
 - 1.1. The specified compressive strength (f_c) shall be 4,000 psi at 28 days.
 - 1.2. The maximum coarse aggregate to be a number 57 or 67 gravel or stone.
 - 1.3. The maximum water cementitious ratio to be 0.45.
 - 1.4. Mix design to be submitted to Engineer for approval.
 - 1.5. Maximum replacement of Portland cement by weight is 25% for fly ash or 50% for ground granulate blast furnace slag.
 - 1.6. Contractor may use admixtures to control setting time to accommodate finishing operations.
 - 1.7. Concrete materials, production, and delivery shall comply with the requirements of ASTM C94-20, "The Standard Specification for Ready-Mix Concrete"
 - 1.8. Concrete shall be air entrained 3% to 6%.
2. Criteria for concrete producer:
 - 2.1. The concrete batch plan shall either meet the requirements of the National Ready Mix Concrete Association Quality Control Manual, Section 3, Plant Check List or be approved by the Mississippi Department of Transportation.
3. Criteria for concrete contractor:
 - 3.1. The lead finisher on each placing crew of not over five individuals must be certified as an ACI Flatwork Finisher or ACI Flatwork Technician with a current certificate. If the lead finisher is not certified, the finishing subcontractor must provide a list of at least three jobs of similar scope along with the name and phone number of the project superintendent. The Owner will give tentative approval based upon checking the references and evaluating the first placing and finishing associated with this project.
4. Design Criteria:
 - 4.1. Concrete to be plain jointed and a minimum of 6 inches thick unless shown on drawings. No stay in place forms shall be used.
5. Jointing:
 - 5.1. Joint spacing to be adjusted as required by field conditions to match plans. In no case should the maximum joint spacing exceed 12'-0".
 - 5.2. Sawing of the joints shall commence as soon as the concrete has hardened sufficiently to support the weight of the saw and avoid spalling of the concrete. In no case shall sawing operations be delayed until the following day or later.
 - 5.3. Joints shall be cut utilizing an early entry saw. The depth of the joints shall be 1.5" minimum.
 - 5.4. Contractor shall submit plan showing proposed construction joint locations to Engineer prior to construction.
 - 5.5. All irregular panels shall be reinforced with 4 deformed bars @ 16" on center and located 2" below the surface of pavement. Irregular panels are denoted with a solid grey hatch pattern on the plan view.
 - 5.6. All joints between curb and gutter and concrete pavement shall be a thickened edge isolation joint as described within the concrete pavement details.
 - 5.7. Thickened edge isolation joints are required at locations denoted with thicker solid line on plan view.
 - 5.8. Deformed bars required (installed per details) to tie panels together as shown within the traveled way as denoted on plan view.
6. Texturing and Curing:
 - 6.1. The final concrete surface to receive a light broom finish for slip resistance.
 - 6.2. Immediately after final finishing, begin curing the concrete and cure for a minimum of 7 days. Contractor may use curing compound applied as recommended by the manufacturer, plastic sheets at least 4 mils thick or any other curing method approved by the Engineer. The contractor to verify the curing method is compatible with subsequent finishes and does not cause unwanted discoloration of the concrete.



DALE BAILEY
AN ASSOCIATION

Architects

One Jackson Place 250
188 East Capitol Street
Jackson, MS 39201
p 601.352.5411

201 Park Court Suite B
Ridgeland, MS 39157
p 601.790.9432

161 Lameuse St. Suite 201
Biloxi, MS 39530
p 228.374.1409

dalebaileyplans.com



22034.08 MHS Parking and Site
2320 32nd St, Meridian, MS 39305

Construction Documents

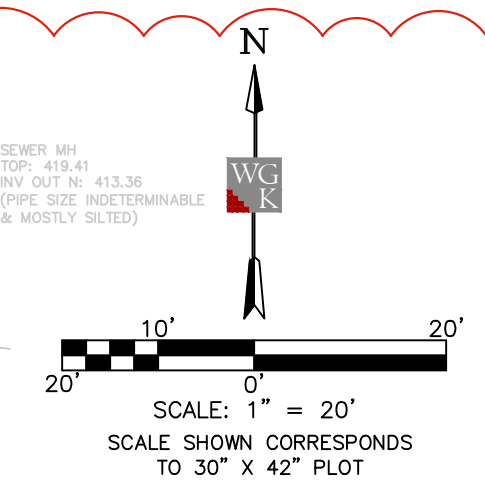
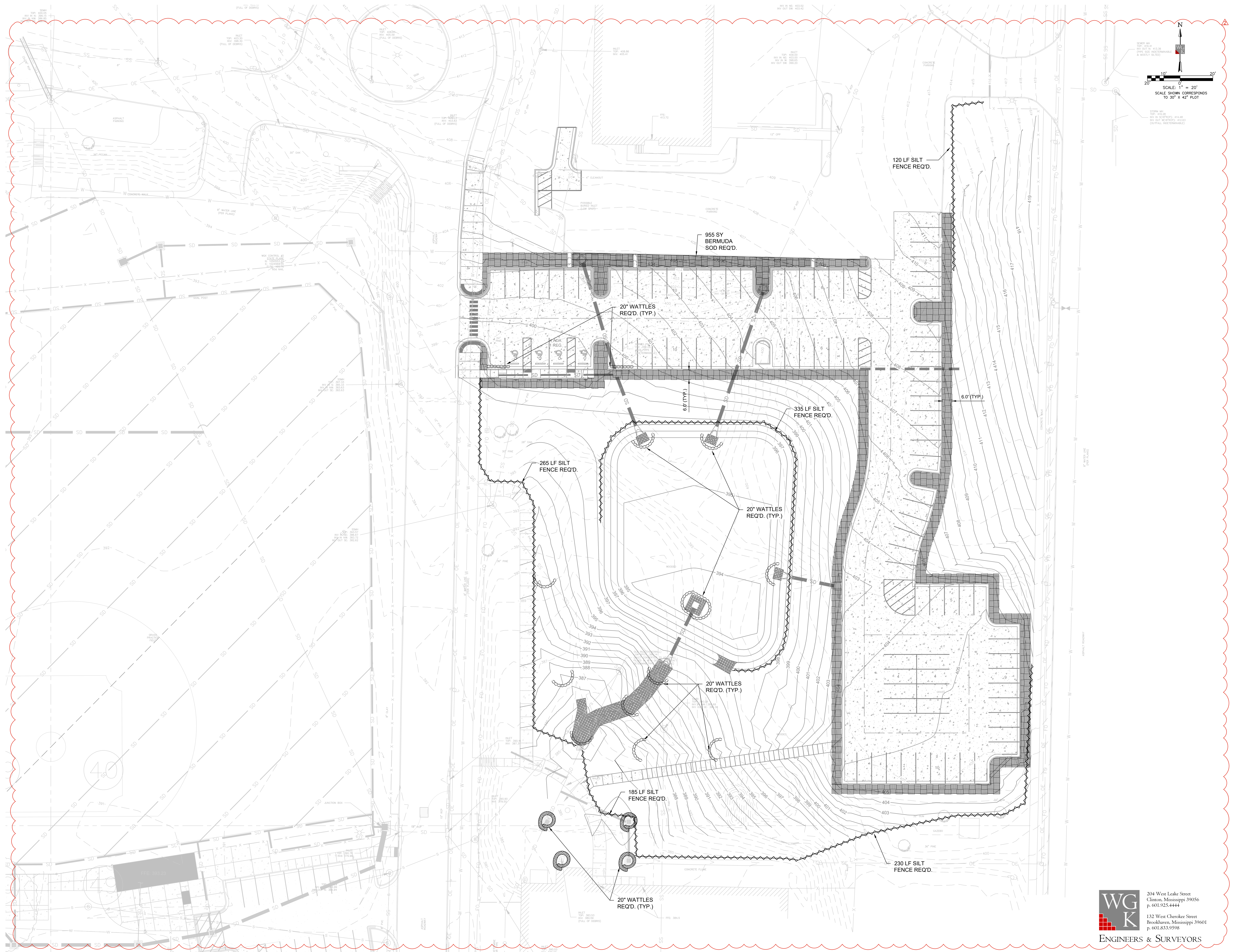
Project No	22034.02
Date	02/13/2024
Drawn	JB
Checked	BLM
Revision #	Date
1	03/13/2024

WG K
ENGINEERS & SURVEYORS

204 West Leake Street
Clinton, Mississippi 39056
p. 601.925.4444

132 West Cherokee Street
Brookhaven, Mississippi 39601
p. 601.833.9598

C-400
Joint Layout Plan



Architects
One Jackson Place 250
188 East Capitol Street
Jackson, MS 39201
p 601.352.5411

201 Park Court Suite B
Ridgeland, MS 39157
p 601.790.9432

161 Lameuse St. Suite 201
Biloxi, MS 39530
p 228.374.1409

dalebaileyplans.com



22034.08 MHS Parking and Site
2320 32nd St, Meridian, MS 39305

Construction Documents

Project No	22034.02
Date	02/13/2024
Drawn	JB
Checked	BLM
Revision #	Date
1	03/13/2024

WG K
ENGINEERS & SURVEYORS
204 West Lake Street
Clinton, Mississippi 39056
p. 601.925.4444
132 West Cherokee Street
Brookhaven, Mississippi 39601
p. 601.833.9598