

SECTION 009113 – ADDENDUM ONE

PART 1 - ADDENDA

1.6 PROJECT INFORMATION

- A. Project Name: 22034.03 Meridian High School Baseball/Softball Rebid
- B. Owner: Meridian Public School District, 1019 25<sup>th</sup> Avenue, Meridian, MS 38391
- C. Architect: Dale | Bailey, an Association, One Jackson Place, Suite 250, 188 East Capitol Street, Jackson, MS 39201-2100
- D. Architect Project Number: 22034.03
- E. Date of Addendum One: 10 August 2023



1.7 NOTICE TO BIDDERS

- A. This Addendum is issued to all registered plan holders pursuant to the Instructions to Bidders and Conditions of the Contract. This Addendum serves to clarify, revise, and supersede information in the Project Manual, Drawings, and previously issued Addenda. Portions of the Addendum affecting the Contract Documents will be incorporated into the Contract by enumeration of the Addendum in the Owner/Contractor Agreement.
- B. The Bidder shall acknowledge receipt of this Addendum in the appropriate space on the Bid Form.
- C. The date for receipt of bids is unchanged by this Addendum at same time and location.

1.8 GENERAL

- A. Attached are the annotated Pre-Bid Meeting Minutes and Meeting Attendees dated 10 August 2023.

1.6 REVISIONS TO TECHNICAL SPECIFICATIONS

- A. DOCUMENT 321813 – SYNTHETIC GRASS SURFACING. (Reissued). Delete this section in its entirety and replace it with attached. Changes include updated language at line items 2.2B, 2.3A, 2.3B, 2.3C, 2.3D.

## 1.8 ATTACHMENTS

- A. Annotated Pre-Bid Meeting Minutes and Meeting Attendees dated 10 August 2023.
- B. This Addendum includes the following attached Specifications:
  - 1. Specification 321813 – Synthetic Grass Surfacing dated 10 August 2023.
- C. This Addendum includes the following attached Drawings.
  - 1. C-10 General Notes & Index
  - 2. C-20 Traffic Control Plan & Phasing
  - 3. C-100 Survey
  - 4. C-101 Survey
  - 5. C-102 Survey
  - 6. C-200 Demo Plan
  - 7. C-300 Overall Site Plan
  - 8. C-301 Site Plan
  - 9. C-302 Site Plan
  - 10. C-303 Site Plan
  - 11. C-400 Overall Geometric Plan
  - 12. C-401 Geometric Plan
  - 13. C-402 Geometric Plan
  - 14. C-403 Geometric Plan
  - 15. C-500 Overall Grading Plan
  - 16. C-501 Grading Plan
  - 17. C-502 Grading Plan
  - 18. C-503 Grading Plan
  - 19. C-600 Overall Drainage Plan
  - 20. C-601 Drainage Plan
  - 21. C-602 Drainage Plan
  - 22. C-603 Drainage Plan
  - 23. C-604 Detention Pond
  - 24. C-700 Overall Utility Plan
  - 25. C-701 Sewer Plan and Profile
  - 26. C-702 Water Layout
  - 27. C-800 Construction Details
  - 28. C-801 Construction Details
  - 29. C-802 Construction Details
  - 30. C-803 Construction Details
  - 31. C-804 Water Details
  - 32. C-805 Sewer Details
  - 33. C-806 Driveways Curb & Gutter, & Sidewalk
  - 34. C-807 Driveways, Integral Curb & Sidewalk
  - 35. C-808 Curb Ramps Detectable Warning Details
  - 36. C-809 Flexible Pipe Culvert Installation
  - 37. C-810 Junction Box For Pipe Culverts
  - 38. C-811 Junction Box for Box Culvert To Concrete Arch Pipe
  - 39. C-812 Junction Box Type 2 for Traffic Load
  - 40. C-813 Branch Connections
  - 41. C-814 Median Inlets for Box Culvert
  - 42. C-815 Gutter Inlet for Type 2 Curb
  - 43. C-816 Gutter Inlet for Type 2 Curb
  - 44. C-817 Storm Sewer Inlet

- 45. C-818 Drop Inlets and Grate Details for Pipes and Box Culverts
- 46. C-819 Flared End Section
- 47. C-900 Erosion Control Plan

END OF ADDENDUM ONE

## SECTION 321813 - SYNTHETIC GRASS SURFACING

## PART 1 - 1.0 GENERAL REQUIREMENTS

## 1.1 Related Documents

- A. Drawings and general provisions of the Contract, including General and Supplementary Conditions, apply to this section.

## 1.2 Scope of Work

- A. Furnish all labor, materials, tools, and equipment necessary to install, in place, all synthetic turf material as indicated on the plans and as specified herein. The installation of all new materials shall be performed in strict accordance with the Manufacturer's written installation instructions, and in accordance with all approved shop drawings.
- B. Prior to order of materials, the Synthetic Turf Contractor shall submit the following:
  - 1. Product data, including Independent Laboratory Test Results
  - 2. Installation details
  - 3. Sample Warranty
  - 4. Field layout and striping plans
  - 5. Details on construction, especially any details that may deviate from plans and specifications.
- C. Prior to the beginning of installation, the Synthetic Turf Contractor of the synthetic turf shall verify the base for planarity. Upon written confirmation from the base contractor that compaction/planarity and drainage/permeability specifications have been achieved, the installation of synthetic turf will proceed as arranged.
- D. Prior to Final Acceptance, the Synthetic Turf Contractor shall submit to the Owner three (3) copies of Executed Warranty Documents and Maintenance Manuals, which will include necessary instructions for the proper care and preventative maintenance of the synthetic turf system, including painting and striping.

## 1.3 Shop Drawings

- A. Shop drawings shall be prepared and contain all pertinent information regarding installation. These drawings shall be submitted to the Owner or Owner's representative for approval prior to the manufacturing and shipment of materials.
- B. Submit drawings for:
  - 1. Installation details, edge detail, goal post detail, other inserts, and covers, etc., as required by contract.
  - 2. Striping plan showing any field lines, markings and boundaries, and field logos per project drawings.



## 1.4 Quality Assurance

## A. Synthetic Turf Manufacturer is defined as:

1. A company specializing in the design and manufacturing of infilled turf systems with not less than five (5) years documented experience.
2. The Synthetic Turf Manufacturer must have been in business under the same ownership for at least five (5) years, and shall have been installing similar sports fields for that entire period.
3. Manufacturer shall have an experienced technical services and sales professional who is available during the course of the work to meet personally with the Owner, Contractor, and Landscape Architect.

## B. Synthetic Turf Manufacturer's Experience:

1. The Synthetic Turf Manufacturer shall have the experience of at least one hundred (100) acceptable installations of full-size fields (minimum 65,000 sq. ft.) in the United States within the past five (5) years of tufted, polyethylene grass-like fabrics that are filled with either all rubber or a mixture of SBR rubber and sand. Submit a list of all applicable installations with the bid.
2. The Synthetic Turf Manufacturer shall have the experience of twenty-five (25) acceptable installations (minimum 65,000 sq. ft.) of fields that are at least eight years old. Submit a list of all applicable installations with the bid.
3. The Synthetic Turf Manufacturer shall have the experience of fifty (50) acceptable installations of the specific fiber system specified. Submit a list of all applicable installations with the bid.
4. The Synthetic Turf Manufacturer shall have the experience (if applicable to this project specification) of one hundred (100) installations with sewn main fabric seams.
5. The Synthetic Turf Manufacturer must be a certified member of the Synthetic Turf Council in good standing.
6. The Synthetic Turf Manufacturer must have and operate its own extensive research and development laboratory. This laboratory must include testing devices for the following tests: Yarn Tensile Strength, Yarn Elongation, Tuft Bind, Grab Tear Strength, Seam Strength, g-max, Force Reduction, Vertical Deformation, Ball Roll, Ball Rebound, Rotational Resistance, Linear Traction, Relative Abrasive Index, UV Resistance, Flammability, and Simulated Aging.
7. Testing of the synthetic turf system is mandatory and must be provided from a laboratory that is accredited by the NVLAP. Testing from laboratories that are not NVLAP accredited will not be accepted. The National Institute of Standards and Technology (NIST) is part of the U.S. Department of Commerce and administers the National Voluntary Laboratory Accreditation Program (NVLAP). Accreditation requirements are established in accordance with the U.S. Code of Federal Regulations (CFR, Title 15, Part 285), National Voluntary Laboratory Accreditation Program, and encompass the requirements of ISO/IEC 17025.
8. The Synthetic Turf Manufacturer must have manufactured and installed fields at every level of competition, including high school, college and professional.
9. The Synthetic Turf Manufacturer must have at least stadium (1) one current NCAA Division 1 baseball game field (1) one current MLB Stadium field. (1) one current NCAA Division 1 football game field and (1) one current NFL game field.
10. The Synthetic Turf Manufacturer must not have had more than (5) five fields replaced, under warranty, during the past five (5) years.
11. The Synthetic Turf Manufacturer must be vertically integrated including in-house tufting, polyethylene monofilament extrusion, in-house coating, polyurethane compounding,

manufacture own primary backing, in-house yarn texturizing, ability and flexibility to tuft various gauge widths and have the ability to recycle used/old fields.

12. The Synthetic Turf Manufacturer must have a fully integrated quality system, directly based on and compliant with ISO 9000, ISO 14001 and OHSAS 18001 international standards.

C. Synthetic Turf Contractor is defined as:

1. A company that has built and installed a minimum of ten (10) infilled synthetic turf fields. Turf contractors and on-site superintendent shall provide a resume to provide proof of experience
  - a. At any time after award of the contract and before the completion of the project, should any member of the approved crew or subcontractor discontinue their relationship with the synthetic turf crew or subcontractor the Owner shall be notified. Failure to provide personnel meeting the minimum qualifications shall be considered default of the contract requirements

D. Warranty: The Synthetic Turf Contractor shall submit its Manufacturer's Warranty, which guarantees the usability and playability of the synthetic turf system for its intended uses for an eight (8) year period commencing with the date of Substantial Completion.

1. 1. The warranty submitted must have the following characteristics:
  - a. Must provide full-field coverage for eight (8) years from date of Substantial Completion,
  - b. Must warrant materials and workmanship,
  - c. Must warrant that the materials installed meet or the product specifications within manufacturing tolerances,
  - d. Must have a provision to either repair or replace such portion of the installed materials that are no longer serviceable to maintain a serviceable and playable surface,
  - e. Must be a Manufacturer's warranty from a single source covering workmanship and all self-manufactured or procured materials,
  - f. Must not be limited to the amount of annual usage,
  - g. Must provide, at the time of bid, a copy of its pre-paid 3rd party insurance policy. This policy must have an annual aggregate amount of no less than \$60 million, and a per incident limit of no less than \$7 million per claim. The third party insurer must have an AM Best rating of A++ or better.

1.5 Existing Conditions

- A. A.If the surface on which the new synthetic turf is to be installed is an existing asphaltic/concrete base, the Synthetic Turf Contractor will be responsible for any damage due to negligence to the concrete during removal/installation of the synthetic turf system provided there are no failures below the surface which contribute to the damage. The base sleeves, home plate, pitcher's rubber etch are to be removed and reinstalled by the Owner or Prime Contractor to facilitate the installation of the new synthetic turf system.
- B. If the surface on which the new synthetic turf to be installed is a new asphaltic/concrete base or a new base of compacted, porous aggregate, the Synthetic Turf Contractor will be responsible for any damage to the base during removal/installation of the synthetic turf system after the deficiencies (if any) have been corrected by the base contractor with respect to planarity, compaction, and drainage/permeability. New in ground equipment and /or infield mix backfill within the contiguous synthetic turf limits or immediately adjacent thereto are to be installed

prior to the installation of the synthetic turf system. Damage to the synthetic turf system during the installation of such materials is not the responsibility of the Synthetic Turf Contactor.

#### 1.6 Schedule

- A. The Synthetic Turf Contractor shall complete all work on the synthetic turf system in accordance with the published project schedule, or as mutually agreed upon.
- B. The synthetic turf contractor will require unencumbered use of staging area within fifty (50) feet of the synthetic turf area(s) being installed in order to complete the work. The Synthetic Turf Contractor shall also be afforded unencumbered access through the construction site to reach the synthetic turf field area being installed.

#### 1.7 Surface Area

- A. The Synthetic Turf Contractor is to verify all measurements.

#### 1.8 Utilities

- A. A. Owner or Prime Contractor will supply necessary water, adequate lighting, and electricity for installation. Owner or Prime Contractor shall permit use of toilet and wash up facilities.

### PART 2 - 2.0 PRODUCTS

#### 2.1 Approved Manufacturers:

- A. Basis of Design: Major Play Matrix by Hellas Construction
- B. AstroTurf
- C. FieldTurf
- D. Shaw Sports Turf
- E. Prior approved manufacturers must meet all the minimum requirements of the specifications.

#### 2.2 Materials

- A. This is a multi-surface system designed to mimic a true baseball/softball field. Fabric must be manufactured by same source and infills must be followed precisely. Refer to section 2.3.
- B. Shall be tufted, polyethylene, grass-like fabric coated with a secondary backing of high-grade polyurethane. Fiber systems specified shall be 100% monofilament and tufted through the same needle in a grass-like fabric to a specified finished pile-height. Alternating row construction will not be accepted.

- C. All components and their installation method shall be designed and manufactured for use on outdoor athletic fields. The materials as hereinafter specified should be able to withstand exposure in all climates, be resistant to insect infestation, rot, fungus, mildew, ultraviolet light and heat degradation, and shall have the basic characteristics of flow-through drainage, allowing free movement of surface runoff through the synthetic turf fabric where such water may flow to the existing base and into the field drainage system.
- D. The finished playing surface shall appear as mowed grass and clay surface and shall resist abrasion and cutting from normal use.
- E. The polyethylene pile yarn shall be a proven athletic caliber yarn designed specifically for outdoor use and stabilized to resist the effect of ultraviolet degradation, heat, foot traffic, water, and airborne pollutants.
- F. The system shall be tufted at a specified pile height, face weight, and gauge as described in section 2.3.
- G. The Primary Backing must be a multi-layer backing, contain UV stabilizers and must pass 3000 hours of QUV A testing
- H. The Secondary Backing of high-grade polyurethane shall be applied to the Primary Backing. Secondary Backing adds resistance to water degradation and strengthens grip on fibers.
- I. The entire backing shall be coated with holes perforated throughout the backing at the Synthetic Turf Manufacturer's recommended interval to allow for drainage. Partially coated backings or latex coating materials shall not be acceptable.
- J. Perimeter edge details, underground storm sewer piping and connections, and goal post foundations required for the system shall be as detailed and recommended by the Design Professional, and as approved by the Owner. The cost for these embedded items shall be included in the Sitework Contractor's price along with the compacted, porous base.

2.3 System Components (measures are minimum requirements; products may exceed requirements):

- A. Infield Clay Areas: The fibers specified shall be tufted through a single needle to a finish pile height & weight using a proprietary infill mix and depth to resemble & play like a professional quality conditioned clay surface. Alternating row construction will not be accepted.
  - 1. Linear Density - Denier Tape 8,000
  - 2. Thickness - (Microns) MIN 170
  - 3. Total Product Weight MIN 71.9 oz/sy
  - 4. Pile Yarn Fiber Weight MIN 42 oz/sy
  - 5. Primary Backing Weight MIN 7.9 oz/sy
  - 6. Secondary Backing Weight MIN 20 Oz/sy
  - 7. Average Pile Height between 1.5 & 2 inches
  - 8. Average Tuft Bind Strength > 10 lbs
  - 9. Tufting Gauge 3/8" maximum
  - 10. Average Grab Tear Strength > 200
  - 11. Turf Manufacturer's Proprietary Infill Mix 6.5 lbs/sf minimum

- B. Infield, Outfield, and Foul Grass Areas – The fibers specified shall be tufted through a single needle to the finished pile height & weight using a proprietary infill mix and depth to resemble & play like a professional quality natural grass infield. Alternating row construction will not be accepted.

1. Linear Density - Denier Monofilament 10,800
2. Thickness (Microns) MIN 170
3. Total Product Weight MIN 71.9 oz/sy
4. Pile Yarn Fiber Weight MIN 42 oz/sy
5. Primary Backing Weight MIN 7.9 oz/sy
6. Secondary Backing Weight MIN 20 Oz/sy
7. Average Pile Height between 1.5 & 2 inches
8. Average Tuft Bind Strength > 10 lbs
9. Tufting Gauge 1/2" maximum
10. Average Grab Tear Strength > 200
11. Turf Manufacturer's Proprietary Infill Mix 5.0 lbs/sf minimum

- C. Mound and Batter's Boxes – The fibers specified shall be tufted through a single needle to a finish pile height & weight using a proprietary infill mix and depth to resemble & play like a professional quality conditioned clay surface. Alternating row construction will not be accepted. Provide hook & loop seaming for replaceable batters boxes and pitching lanes and 4 additional sets of replacement pieces per field.

1. Linear Density - Denier Tape 8,000
2. Thickness (Microns) MIN 170
3. Total Product Weight MIN 100 oz/sy
4. Pile Yarn Fiber Weight MIN 76 oz/sy
5. Primary Backing Weight MIN 7.9 oz/sy
6. Secondary Backing Weight MIN 20 Oz/sy
7. Average Pile Height between 1.5 & 2 inches
8. Average Tuft Bind Strength > 10 lbs
9. Tufting Gauge 1/4" maximum
10. Average Grab Tear Strength > 200
11. Turf Manufacturer's Proprietary Infill Mix 6.5 lbs/sf minimum

- D. Warning Track – The fibers specified shall be tufted through a single needle to the finished pile height & weight using a proprietary infill mix and depth to resemble a clay warning track.

1. Linear Density - Denier Tape 8,000
2. Thickness (Microns) MIN 170
3. Total Product Weight MIN 70 oz/sy
4. Pile Yarn Fiber Weight MIN 42 oz/sy
5. Primary Backing Weight MIN 7.9 oz/sy
6. Secondary Backing Weight MIN 20 Oz/sy
7. Average Pile Height between 1.5 & 2 inches
8. Average Tuft Bind Strength > 10 lbs
9. Tufting Gauge 1/2" maximum
10. Average Grab Tear Strength > 200
11. Turf Manufacturer's Proprietary Infill Mix 6.5 lbs/sf minimum

## 2.4 Infill Materials

- A. SBR Rubber

1. Rubber Granule Shape Spherical, Moderate, Angular
2. Rubber Sieve Analysis 10 / 20MESH (2.0mm – 0.85mm)

B. Sand Infill

1. Sand Granule Shape Semi-rounded to rounded angularity
2. Sand Sieve Analysis 20/40 MESH (0.85mm-0.425 mm)

2.5 Maintenance Equipment

- A. Provide a GreensGroomer 920SDE drag brush
- B. Provide a GreensGroomer LitterKat sweeper

PART 3 - 3.0 EXECUTION

3.1 3.1 General

- A. The installation shall be performed in full compliance with approved shop drawings.
- B. Only factory-trained technicians skilled in the installation of athletic caliber synthetic turf systems shall undertake the placement of the system.
- C. Subject to the requirements in Section 1.2(B), the surface to receive the synthetic turf shall be verified by the Synthetic Turf Contractor as ready for the installation of the synthetic turf system and must be perfectly clean as installation commences and shall be maintained in that condition throughout the process.

3.2 Installation

- A. The completed base and adjacent curbs/perimeter nailer shall be inspected by the Engineer or Sitework Contractor by means of a laser and plotted on a 10-foot grid. Based upon the Contractor's inspection of the topographical survey, the Sitework Contractor shall fine grade the base suitably, including properly rolling and compacting the base to achieve a surface planarity within 1/4" in 10-feet (+0, -1/4"). OWNER, ENGINEER, OR PRIME CONTRACTOR SHALL NOT APPROVE THE BASE FOR TOLERANCE TO GRADE WITHOUT OBTAINING THE TOPOGRAPHICAL SURVEY.
- B. Subgrade and base shall be uniformly compacted to a minimum of 95% of maximum dry density. Care must be exercised to minimize segregation. Engineer/Sitework Contractor shall make written records available to Synthetic Turf Contractor's inspector for both drainage/permeability and compaction/planarity as obtained from a minimum 10' x 10' grid.
- C. The Synthetic Turf Project Superintendent shall thoroughly inspect all synthetic turf materials delivered to the site for both mixing and quantity to assure that the entire installation shall have sufficient material to maintain proper mixing ratios.
- D. Synthetic turf shall be loose-laid across the field, stretched, and attached to the perimeter edge detail. Synthetic turf shall be of sufficient length to permit full cross-field installation. No head or

cross seams will be allowed except as needed for inlaid fabric striping or to accommodate programmed cut-outs.

- E. All seams shall be flat, tight, and permanent with no separation or fraying. Selvedge edges of all panels must be cut and discarded prior to being sewn or glued together. If sewing, a butt-stitch method of seaming must be implemented and a double-lock stitch with cord recommended by the Synthetic Turf Manufacturer shall be utilized. Bagger stitching is prohibited. Seaming tape is to be constructed of high tenacity, coated non-woven fabric. Inlaid markings shall be adhered to seaming tape with a high strength polyurethane adhesive applied per the Synthetic Turf Manufacturer's standard procedures for outdoor applications. All main fabric seams shall be transverse to the field direction (i.e. run perpendicularly across the field).
- F. Infill materials shall be properly applied in numerous lifts using special broadcasting equipment. The synthetic turf shall be raked and brushed properly as the mixture is applied. The infill materials can only be applied when the synthetic turf fabric is dry.
- G. g-Max (shock attenuation) test < 200 at installation.

### 3.3 3.4 Field Markings and Decorations

- A. Field markings and decorations shall be installed in accordance with approved project shop drawings.

### 3.4 Clean Up

- A. Synthetic Turf Contractor shall provide the labor, supplies, and equipment, as necessary, for final cleaning of the surfaces.
- B. The Synthetic Turf Contractor shall keep the area clean and clear of debris throughout the project.
- C. Surfaces, recesses, enclosures, etc., shall be cleaned as necessary to leave the work area in a clean, immaculate condition ready for immediate occupancy and use by Owner.

END OF SECTION 321813

Agenda

Minutes 8/10/23

201 Park Court, Suite B  
Ridgeland, MS 39157  
P 601.790.9432  
F 888.281.0547

10 August 2023

22034.03 Meridian High School Baseball/Softball / Pre-Bid Meeting

One Jackson Place, Suite 250  
188 East Capitol Street  
Jackson, MS 39201-2100  
P 601.352.5411  
F 601.352.5362

161 Lameuse Street, Suite 201  
Biloxi, MS 39530  
P 228.374.1409  
F 228.374.1414

**1. General**

- a. Please silence cell phones
- b. Sign-in sheet: Minutes will include list of meeting attendees
- c. Plan holders list: Minutes will include list of plan holders
- a. Description: Project includes the construction of a baseball/softball stadium & field house using bond issue funds for the Meridian School District at Meridian Senior High School campus. Site demo, regrading, & civil road work are also included.

**2. Team**

- a. Owner .....Meridian Public School District
  - i. Superintendent..... Dr. Amy Carter
  - ii. Director of Operations.....Clay Sims
- b. Bailey Program Manager ..... Jason Stewart
- c. Architect.....Dale Bailey Architects/Jackson Mississippi
  - 1. principal in charge..... Russ Blount
  - 2. project manager..... Paul Purser
- d. Mechanical .....GSK mechanical, Inc./Jason Kackley / 601.605.2930
- e. Electrical..... the power source PLLC / Chris Green / 601.605.4820
- f. Structural .....Structural Design Group / William Grigg / 615.255.5537
- g. Civil..... WGK, Inc. / Brandon Mckay / 601.925.4444

**3. Procurement and Contracting Requirements**

- a. Advertisement for Bids
  - i. Advertisement dates: 07.27.23 & 08.03.23 24
  - ii. Bid Receipt: Bids to be opened at 2:00 PM on Thursday, August ~~10~~, 2023
  - iii. Bid Location: Meridian Public School District, 1019 25th Avenue, Meridian, MS 39301.
- b. Bidder Qualifications
  - i. Bidders must be properly licensed under the laws governing their respective trades
  - ii. List all applicable state & local license & registration nos. on outside of bid envelope



- c. Bonding & Insurance
  - i. Bidders must be able to obtain insurance and bonds required for the Work
- d. Bid Security
  - i. A Bid Security in the amount of 5% of the total maximum bid amount is required
  - ii. Cash, cashier's check, certified check, US money order, or bid bond
- e. Bid Form and Attachments
  - i. Acknowledgement of Addenda
  - ii. Subcontractor identification
- f. Bid Submittal Requirements
  - i. Envelope requirements (re: Bid Submittal Checklist)
  - ii. Proper identification
- g. Notice of Award
  - i. Offered within 60 days after receipt of bids
  - ii. Award will be made as soon as possible & successful bidder should be ready to secure bonds & insurance immediately

**4. Communication during Bidding Period**

- a. Obtaining documents
  - i. Plan holders are required to register and order bid documents at [www.dalebaileyplans.com](http://www.dalebaileyplans.com)
- b. Bidder's Requests for Information
  - i. Binding answers to questions must be included in an official written addendum and the Contractor or Subcontractor is encouraged to provide written communications to the Architect for proper response
  - ii. Address e-mailed written correspondence to [biddinginfo@dalepartners.com](mailto:biddinginfo@dalepartners.com)
  - iii. No questions will be accepted after 5:00 PM on ~~Monday, August 21, 2023~~ **Friday, August 18, 2023** in order to allow the Architect adequate time to prepare any necessary addenda
- c. Addenda
  - i. Addendum no 1 (issued)..... 08.10.23  
**tentative** **TBD**
  - ii. Addendum no 2 (~~issued~~)..... ~~08.17.23~~  
**TBD**
  - iii. Addendum no 3 (tentative) ..... ~~08.21.23~~  
**TBD**
  - iv. final addendum (if required) ..... 3:00 PM, 08.21.23



- b. Contract Time
  - i. estimated notice to proceed date – TBD – Date of contract signing
  - ii. Project to be fully complete by December 01, 2024
- c. Liquidated Damages
  - i. \$500 each calendar day of the delay after Contract Time
- d. Other Bidder Questions

Parking Lot Dirt Deadline is December 29, 2023. Liquidated Damages Apply.

**8. Post-Meeting Addendum**

- a. May be issued, as necessary to document the meeting questions & provide proper responses

**9. Other Bidder Questions**

- a. Minutes of meeting are issued as Available Information and do not constitute a modification to the Procurement and Contracting Documents
- b. Modifications to the Procurement and Contracting Documents are issued by written Addendum only

**10. Site/facility visit or walkthrough**

End

Question: When will public be given notice on street closure?

Answer: We will make city aware and public will be given notice as soon as possible after acceptance of winning bid.

Item X

A. Allowance No.1: Lump Sum Contingency Allowance of Three Hundred and Seventy-Five Thousand Dollars (\$375,000.00) total for Construction Contingency Allowance.

B. Allowance No. 02: Lump Sum Contingency Allowance of Forty Thousand Dollars (\$40,000.00) for Mississippi Power Utility Allowance.

C. Allowance No. 03: Hardware Allowance of Seventeen Thousand Dollars (\$17,000.00) for Base Bid. Allowance is for material only; installation should be included in base bid.

D. Allowance No. 04L Hardware Allowance of Nineteen Thousand Five Hundred Dollars (\$19,500.00) for Alternate No. 1. Include allowance in alternate no. 1 pricing.

Meeting Attendees

201 Park Court, Suite B  
Ridgeland, MS 39157  
P 601.790.9432  
F 888.281.0547

10 August 2023

22034.03 Meridian High School Baseball/Softball / Pre-Bid Meeting

One Jackson Place, Suite 250  
188 East Capitol Street  
Jackson, MS 39201-2100  
P 601.352.5411  
F 601.352.5362

161 Lameuse Street, Suite 201  
Biloxi, MS 39530  
P 228.374.1409  
F 228.374.1414

	Name	Company	Phone	Email
1	Dr. Amy Carter	Meridian PSD		amcarter@mpsdk12.net
2	<i>AS</i> Clay Sims	Meridian PSD		csims@mpsconnect.org
3	<i>JS</i> Jason Stewart	Bailey Program Man.		jstewart@bailey-pm.com
4	Paul Purser	Dale   Bailey	(601) 506-9093	paulpurser@dalepartners.com
5	<i>Brad Woodall</i>	<i>Woodall Elec.</i>	<i>601-482-6123</i>	<i>brad@woodallelectric.com</i>
6	<i>Kyle Valentine</i>	<i>Hellas</i>	<i>769-990-3455</i>	<i>kvalentine@hellasconstruction.com</i>
7	<i>[Signature]</i>			
8	<i>Hege...</i>	<i>[Signature]</i>	<i>601-292-0091</i>	<i>4055.11@mpsconnect.org</i>
9				
10				
11				
12				
13				
14				
15				





- 1-01 Any existing utility locations shown on plans are shown in their original location based upon the best information available to the ENGINEER. It will be the CONTRACTOR's responsibility to maintain service of existing utilities throughout the project whether they are to remain or they are to be abandoned after relocation.
- 1-02 The CONTRACTOR shall coordinate the location (horizontal and vertical) of any existing utilities with the appropriate utility company before construction begins.
- 1-03 Any utility line or service line encountered during construction, whether shown on plans or not, shall be protected by the CONTRACTOR and any repairs necessary due to damage to same by the CONTRACTOR shall be at no additional cost to the OWNER. Live utilities found during construction that are not shown on the drawings shall be connected to the new system by the contractor.
- 1-04 The CONTRACTOR shall be responsible for verifying horizontal and vertical clearances on any utility service crossings required before installation.
- 1-05 The CONTRACTOR shall establish and maintain grass cover by whatever means necessary to prevent any erosion where the existing vegetation was removed or disturbed during construction. CONTRACTOR shall abide by the minimum requirements in the guidelines established by the MDEQ Storm Water General Permit Regulations See note on erosion control plan regarding OWNER submission of LCN01 and transfer of permit coverage to CONTRACTOR.
- 1-06 The erosion control devices referenced in these plans are a min. requirement. It is the responsibility of the CONTRACTOR to ensure that silt does not leave the property and/or contaminate waters of the U.S. during construction.
- 1-07 Unsuitable bedding, backfill or site subgrade material which may be encountered shall be excavated to the limits required and backfilled with acceptable material to the lines and grades shown on the plans. Unless a separate pay item is noted for this removal and backfill, no additional compensation shall be made but shall be absorbed in the contract price.
- 1-08 Where the construction crosses permanent surfaces or improved features, the CONTRACTOR shall replace same in accordance with the specifications, or shall restore same to its original or better condition. Unless indicated otherwise on the plans, all paved surfaces will be crossed by cased bore or unencased bore, while all gravel surfaces will be crossed by open cut.
- 1-09 The CONTRACTOR's area of work should be limited to the project site and any easements or rights-of-way shown on the plans, unless otherwise noted herein.
- 1-10 All traffic control devices on this project shall comply with the latest edition of the Manual of Uniform Traffic Control Devices (MUTCD).
- 1-11 Prior to excavation and embankment construction, all topsoil shall be stripped and stockpiled. After completion of excavation and embankment construction, all slopes shall be uniformly plated with the stockpiled topsoil. Stripping, stockpiling, placing and spreading of topsoil will not be measured for payment.
- 1-12 All on-site testing/reports during construction SHALL be submitted to the ENGINEER for review. All submittals, manufacturer's certificates, proposed mix designs, etc. shall be submitted to the ENGINEER for review before incorporation into project.
- 1-13 All testing certifications shall state that the subject material meets the specified quality, grade, purity, class, or weight, or that the subject material meets or exceeds the requirement of the applicable ASTM, AASHTO, MDOT, MSDH or other standards. Certifications shall be submitted to the ENGINEER prior to incorporation of the subject material into the project.
- 1-14 The site layout and proposed grading plan have been prepared based on the recommendations of the Architect/Owner and/or their representatives. Any deviation from the plans as shown should be coordinated through and approved by the owner prior to any changes being made. Other construction contracts may be awarded during the construction of these improvements in areas adjacent to this site. Any coordination between Contractors that is required shall be the responsibility of the Contractor.
- 1-15 Handicap ramps shall be ADA compliant. Sidewalks shall have no greater than 2% cross slope. and no grater than 5% running slope. Contractor's responsibility to check/ field verify slopes before pouring concrete sidewalks and notify ENGINEER immediately of any potential issues or deviations from published plan grades.
- 1-16 Water and sewer service connect to the City of Meridian system. Contractor to contact and coordinate with utility representative for utility service connections. Contractor shall be responsible for acquiring all permits and paying all applicable fees required or construction purposes and utility hookups. These fees may include, but are not limited to, road bond, building permit, utility connection fees, etc.
- 1-17 CONTRACTOR to sod all areas that are disturbed due to construction activities, except for those to receive hardscape improvements as shown on the Plan Sheets.
- 1-18 Geotechnical reports are provided within the construction documents. Contractor shall be responsible for following geotechnical recommendations based off of the soil borings that were taken. This includes any required undercut/excavation underneath proposed buildings, pavement, and sidewalks.
- 1-19 CONTRACTOR shall be required to saw cut any places where asphalt and concrete removal is required.
- 1-20 CONTRACTOR required to CCTV all new sewer and storm drain lines (except perforated drainage lines within the baseball field footprint) upon completion of all underground work, including utility relocation (water, storm, sewer, fiber, gas, electrical, etc.) to verify that pipes are installed correctly, at the proper grade, and haven't been compromised by other construction practices.
- 1-21 CONTRACTOR required to have toe-walls on upstream and downstream ends of Flex-a-mat installation.
- 1-22 Parking Lot Area Shown on C-303 with dashed line types and italicized text leaders is not to be completed in this contract. CONTRACTOR to complete dirt subgrade to within +/- 1". CONTRACTOR to provide as-built topographic survey on state plan coordinates to verify dirt is within the specified tolerance. Final dirt grades to be obtained by subtracting depth of Typical Section 2, Sheet C-801 from the final grade points/contours published on the plans. This work is to be completed by December 29 with liquidated damages of \$500/day if not completed.

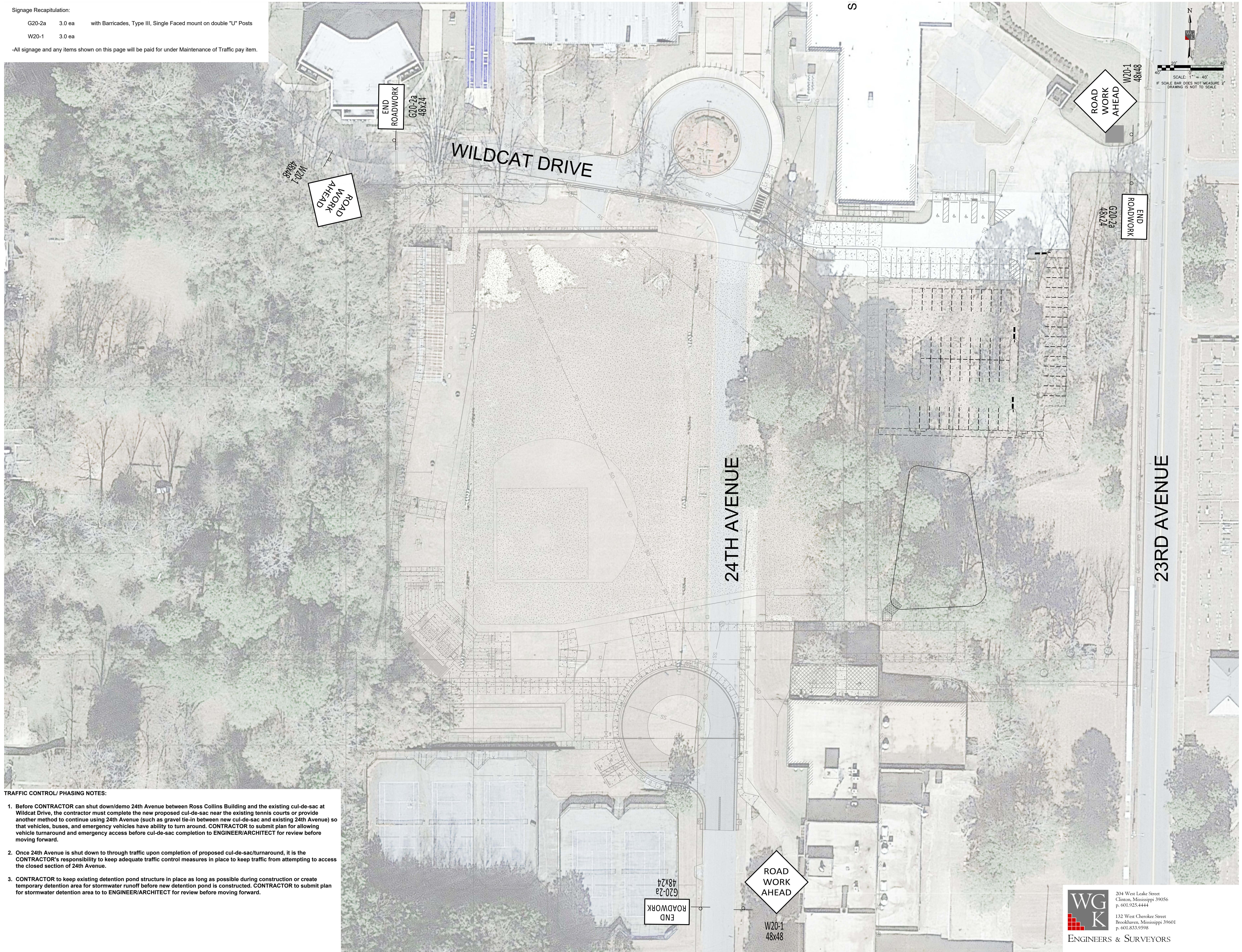
Sheet List Table	
Sheet Number	Sheet Title
C-10	General Notes & Index
C-20	Traffic Control Plan & Phasing
C-100	Survey
C-101	Survey
C-102	Survey
C-200	Demo Plan
C-300	Overall Site Plan
C-301	Site Plan
C-302	Site Plan
C-303	Site Plan
C-400	Overall Geometric Plan
C-401	Geometric Plan
C-402	Geometric Plan
C-403	Geometric Plan
C-500	Overall Grading Plan
C-501	Grading Plan
C-502	Grading Plan
C-503	Grading Plan
C-600	Overall Drainage Plan
C-601	Drainage Plan
C-602	Drainage Plan
C-603	Drainage Plan
C-604	Detention Pond
C-700	Overall Utility Plan
C-701	Sewer Plan and Profile
C-702	Water Layout
C-800	Construction Details
C-801	Construction Details
C-802	Construction Details
C-803	Construction Details
C-804	Water Details
C-805	Sewer Details
C-806	Driveways Curb & Gutter, & Sidewalk
C-807	Driveways, Integral Curb & Sidewalk
C-808	Curb Ramps Detectable Warning Details
C-809	Flexible Pipe Culvert Installation
C-810	Junction Box For Pipe Culverts
C-811	Junction Box for Box Culvert To Concrete Arch Pipe
C-812	Junction Box TType 2 for Traffic Load
C-813	Branch Connections
C-814	Median Inlets for Box Culvert
C-815	Gutter Inlet for Type 2 Curb
C-816	Gutter Inlet for Type 2 Curb
C-817	Storm Sewer Inlet
C-818	Drop Inlets and Grate Details for Pipes and Box Culverts
C-819	Flared End Section
C-900	Erosion Control Plan
C-901	Erosion Control Details



Signage Recapitulation:

- G20-2a 3.0 ea with Barricades, Type III, Single Faced mount on double "U" Posts
- W20-1 3.0 ea

-All signage and any items shown on this page will be paid for under Maintenance of Traffic pay item.



TRAFFIC CONTROL/ PHASING NOTES:

1. Before CONTRACTOR can shut down/demo 24th Avenue between Ross Collins Building and the existing cul-de-sac at Wildcat Drive, the contractor must complete the new proposed cul-de-sac near the existing tennis courts or provide another method to continue using 24th Avenue (such as gravel tie-in between new cul-de-sac and existing 24th Avenue) so that vehicles, buses, and emergency vehicles have ability to turn around. CONTRACTOR to submit plan for allowing vehicle turnaround and emergency access before cul-de-sac completion to ENGINEER/ARCHITECT for review before moving forward.
2. Once 24th Avenue is shut down to through traffic upon completion of proposed cul-de-sac/turnaround, it is the CONTRACTOR's responsibility to keep adequate traffic control measures in place to keep traffic from attempting to access the closed section of 24th Avenue.
3. CONTRACTOR to keep existing detention pond structure in place as long as possible during construction or create temporary detention area for stormwater runoff before new detention pond is constructed. CONTRACTOR to submit plan for stormwater detention area to ENGINEER/ARCHITECT for review before moving forward.

Architects

One Jackson Place 250  
188 East Capitol Street  
Jackson, MS 39201  
p 601.352.5411

201 Park Court Suite B  
Ridgeland, MS 39157  
p 601.790.9432

161 Lameuse St. Suite 201  
Biloxi, MS 39530  
p 228.374.1409

dalebaileyplans.com



**Meridian High School  
Baseball/Softball Re-Bid**  
2320 32nd St, Meridian, MS 39305

Construction Documents

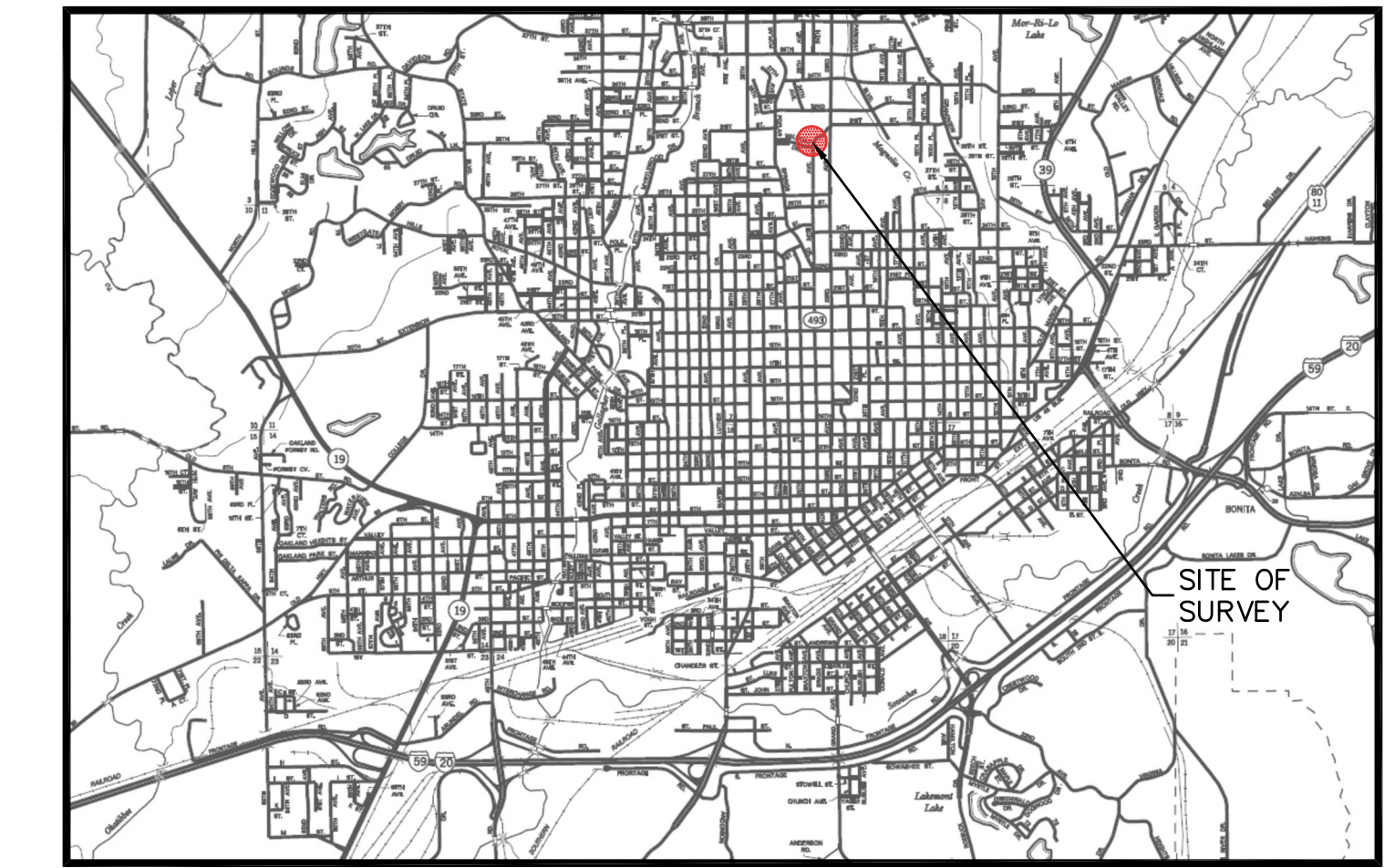
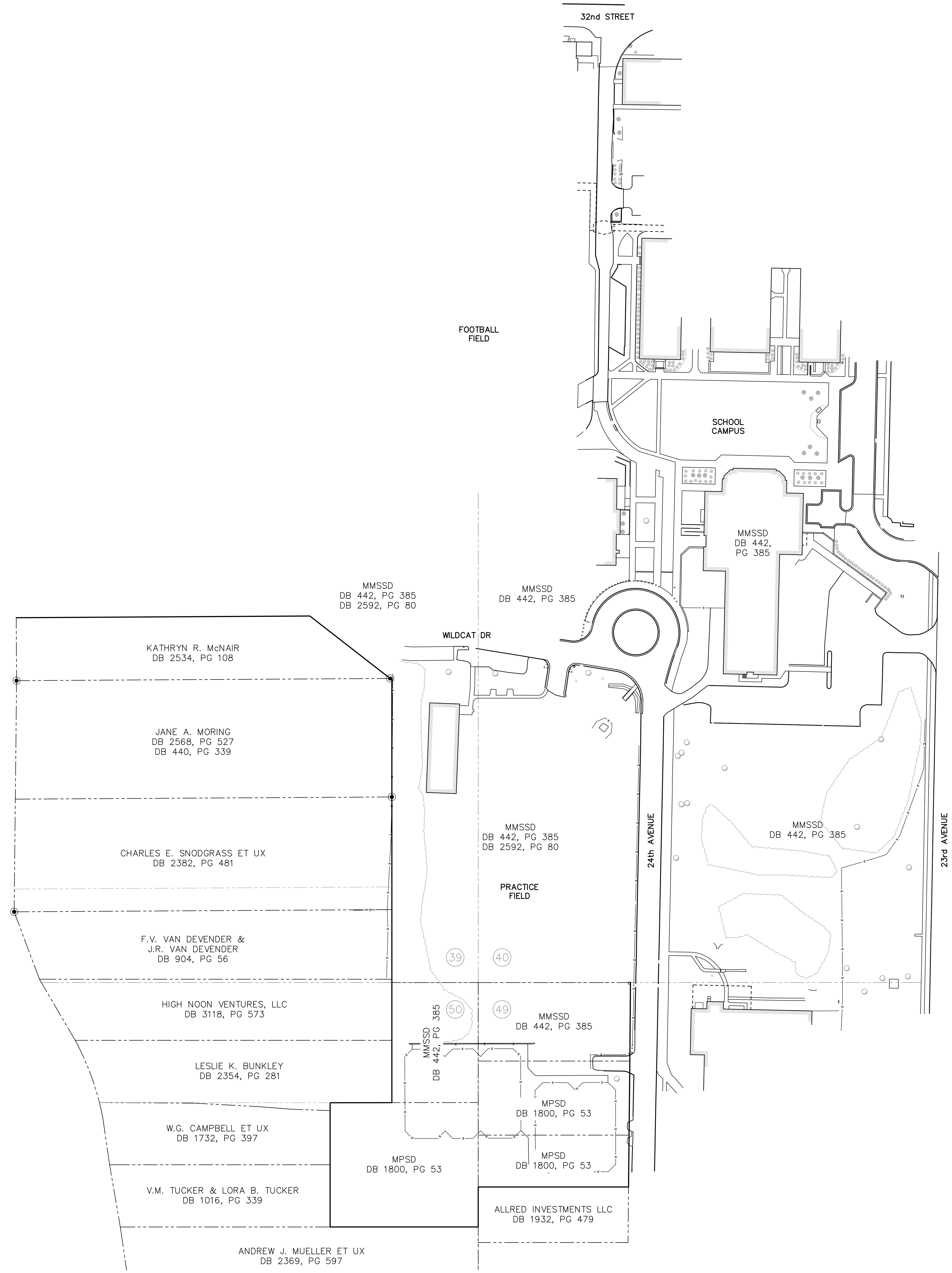
Project No 22034-03  
Date 07/27/2023  
Revisions Rev Date

**C-20**

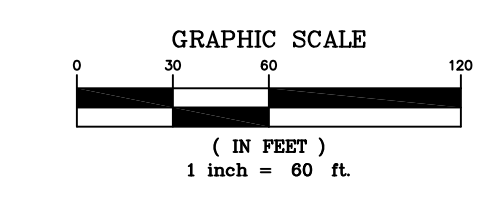
Traffic Control Plan & Phasing



V:\Dale Partners\2022-468-00 Meridian High School Survey\Production Drawings\entopo\_Meridian\_HS.dwg 8/10/2023 3:43 PM



MERIDIAN, LAUDERDALE COUNTY, MISSISSIPPI  
VICINITY MAP



OVERVIEW

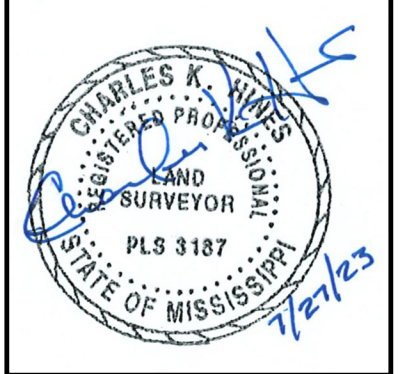
LEGEND  
(SOME LEGEND ITEMS SHADED ON EXHIBIT FOR CLARITY)

- FENCE LINE
OVERHEAD ELECTRIC
STORM DRAIN
NATURAL GAS
SANITARY SEWER
WATER
SURVEY CONTROL
SANITARY SEWER MANHOLE
CLEAN OUT
GAS METER/REGULATOR
WATER METER/VALVE
UTILITY VALVE
BUSH / SHRUB
SMALL ORNAMENTAL TREE
LARGER TREE
PLATTED LOT NUMBERS FROM MOBILE AND OHIO RAILROAD COMPANY SURVEY OF SECTION 6, TOWNSHIP 6 NORTH, RANGE 16 EAST.

NOTE: Platted Lot Numbers from Mobile and Ohio Railroad Company Survey of Section 6, Township 6 North, Range 16 East.

Class "B" survey in accordance with the Minimum Standards for Land Surveying in the State of Mississippi.
Horizontal and Vertical orientation derived from GPS observations and NAD83(2011) GRID data, Mississippi State Plane East Zone, and NAVD88 datum, having a combined factor of 0.99995188 and a convergence angle of (+)0°04'11.8731", as sampled at W/GK control point #2, as shown hereon.
The contours shown hereon were created from elevations collected during a commissioned survey. 95% of the contours shown hereon are certified to have an accuracy of one-half of the contour interval. The remaining contours are certified to be accurate to one contour interval.
Subject property is located within an area having Zone Designation 'X' by the Federal Emergency Management Agency and is graphically shown on Flood Insurance Rate Map No. 28075C0189F, with a date of identification of February 3, 2015, in the City of Meridian, Lauderdale County, State of Mississippi, which is the current Flood Insurance Rate map for the community in which said premises is situated.
• Zone 'X' - Areas determined to be outside of the 0.2% annual chance flood plain.
Location of underground utilities shown on plat is approximate only, and is based on surface evidence of same, or information provided by MS 811 Locate Services and the school. Other underground utilities/structures may exist that were not evident to surveyor.
Subsurface and environmental conditions were not examined or considered as a part of this survey.
This property may be subject to recorded or unrecorded easements, rights-of-way or other encumbrances which are not evident to the surveyor, but which would be revealed by a title search performed by an attorney.
This survey was performed and this plat was prepared by W/GK, Inc., Engineers & Surveyors, P.O. Box 318, Clinton, Mississippi 39060, Phone: (601) 925-4444.
This survey is considered valid only when original seal and signature of surveyor of record is affixed hereto.
I, Charles K. Hines, do hereby certify, to the best of my knowledge, belief, and information, that the features depicted on this plat are a representation of the conditions as they existed on July 27, 2023.

DALE BAILEY AN ASSOCIATION
Architects
One Jackson Place 250
188 East Capitol Street
Jackson, MS 39201
p 601.352.5411
201 Park Court Suite B
Ridgeland, MS 39157
p 601.790.9432
161 Lameux St. Suite 201
Biloxi, MS 39530
p 228.374.1409
dalebaileyplans.com



Meridian High School
Baseball/Softball Re-Bid
2320 32nd St, Meridian, MS 39305

Construction Documents

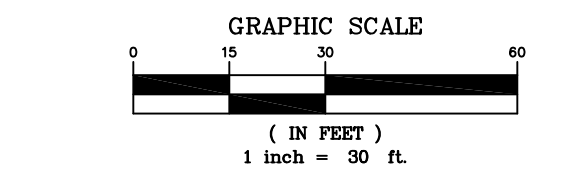
Table with 2 columns: Project No, Date, Revisions, Rev Date, Addendum No.

W/GK ENGINEERS & SURVEYORS
204 West Leake Street
Clinton, Mississippi 39056
p 601.925.4444
132 West Cherokee Street
Brookhaven, Mississippi 39601
p 601.833.9598

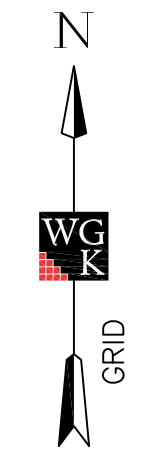
C-100
Existing Conditions



V:\Dale Partners\2022-469-00 Meridian High School Survey\Production Drawings\entopo\_Meridian\_HS.dwg8/10/2023 3:45 PM



DETAIL 1 OF 3



LEGEND

(SOME LEGEND ITEMS SHADED ON EXHIBIT FOR CLARITY)

- FENCE LINE
- OVERHEAD ELECTRIC
- STORM DRAIN
- NATURAL GAS
- SANITARY SEWER
- WATER
- ▲ SURVEY CONTROL
- ⊙ SANITARY SEWER MANHOLE
- CLEAN OUT
- ⊙ GAS METER/REGULATOR
- ⊙ WATER METER/VALVE
- ⊙ UTILITY VALVE
- ⊙ BUSH/SHRUB
- ⊙ SMALL ORNAMENTAL TREE
- ⊙ LARGER TREE
- FLATTED LOT NUMBERS FROM MOBILE AND OHIO
- ⊙ RAILROAD COMPANY SURVEY OF SECTION 6, TOWNSHIP 6 NORTH RANGE 16 EAST.

NOTE: Some inlets are shelved with a 4" to 6" opening to the bottom. Pipe directions and sizes are shown where discernable.

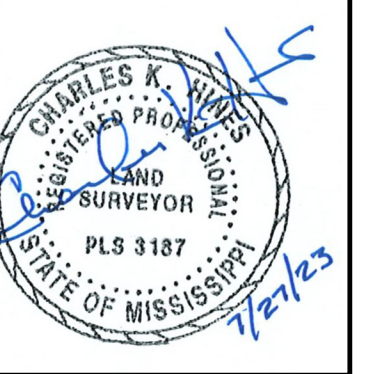
DALE BAILEY AN ASSOCIATION

Architects  
 One Jackson Place 250  
 188 East Capitol Street  
 Jackson, MS 39201  
 p 601.352.5411

201 Park Court Suite B  
 Ridgeland, MS 39157  
 p 601.790.9432

161 Lameuse St. Suite 201  
 Biloxi, MS 39530  
 p 228.374.1409

dalebaileyplans.com



Meridian High School  
 Baseball/Softball Re-Bid  
 2320 32nd St, Meridian, MS 39305

Construction Documents

Project No	22034-03
Date	07/27/2023
Revisions	Rev Date
Addendum No.	1 8/10/23

**WGK**  
 ENGINEERS & SURVEYORS

204 West Leake Street  
 Clinton, Mississippi 39056  
 p. 601.325.4444

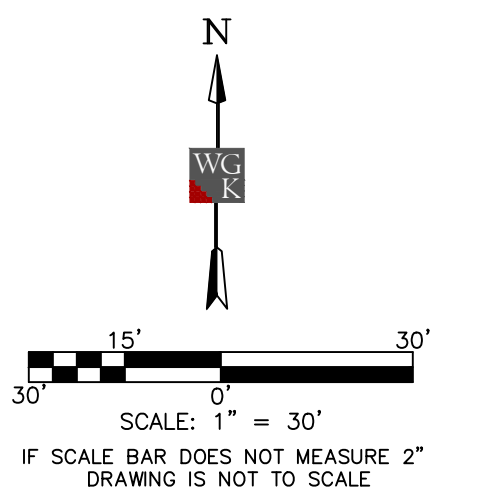
132 West Cherokee Street  
 Brookhaven, Mississippi 39601  
 p. 601.833.9598

C-101 Existing Conditions



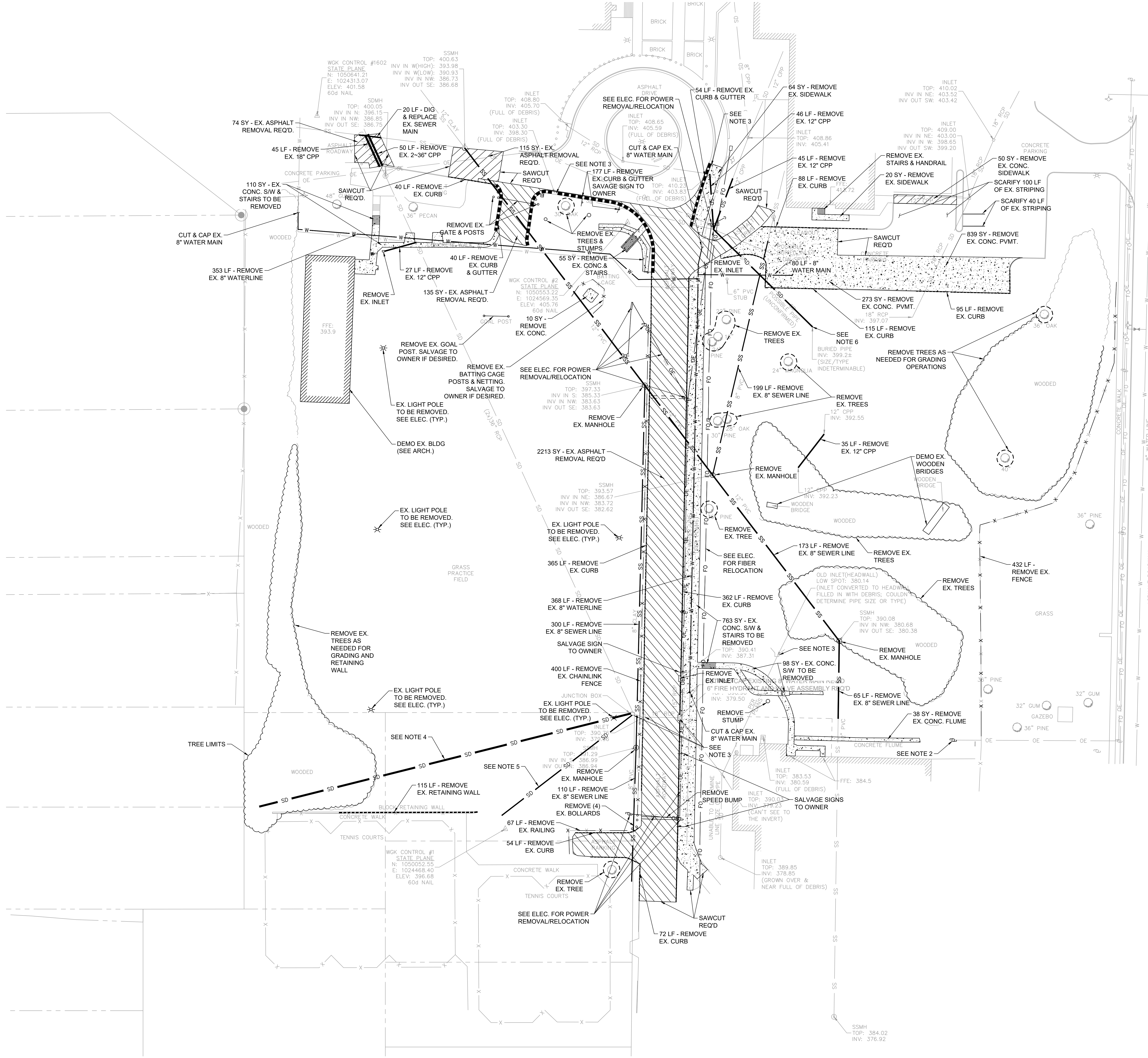






**NOTES:**

1. Sawcut required at all asphalt and concrete removal.
2. CONTRACTOR to coordinate with utility to support/relocate existing pole as needed to accommodate proposed grading.
3. Modifications to be made to these drainage structures. See Civil Drainage Plan.
4. CONTRACTOR to uncover and locate existing 18" RCP, associated branch lines, and upstream end. Approximate location shown on plans. Contractor should anticipate removing 320 LF of 18" RCP but is required to locate/uncover pipe to receive final direction from ENGINEER.
5. CONTRACTOR to uncover and locate existing 10" VCP/HDPE pipe, associated branch lines, and upstream end. Approximate location shown on plans. CONTRACTOR to anticipate removing 135 LF of 10" storm drain but is required to uncover & locate pipe to receive final direction from ENGINEER.
6. REMOVE approximately 70 LF of 18" HDPE pipe from existing detention pond until concrete junction box, remove existing junction box, and an additional 44 LF of 18" RCP.



V:\Data Partners\2025-349-00 Meridian High School Baseball\_Softball\_1\Production Drawings\Rebid\C-200 Demo Plan.dwg 8/10/2025 4:10 PM

**Meridian High School  
Baseball/Softball Re-Bid**  
2320 32nd St, Meridian, MS 39305

**Construction Documents**

Project No	22034-03
Date	8/10/23
Revisions	Rev Date
Addendum #1	8/10/23

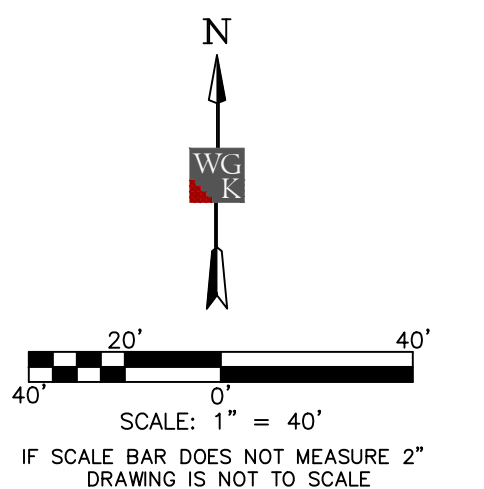
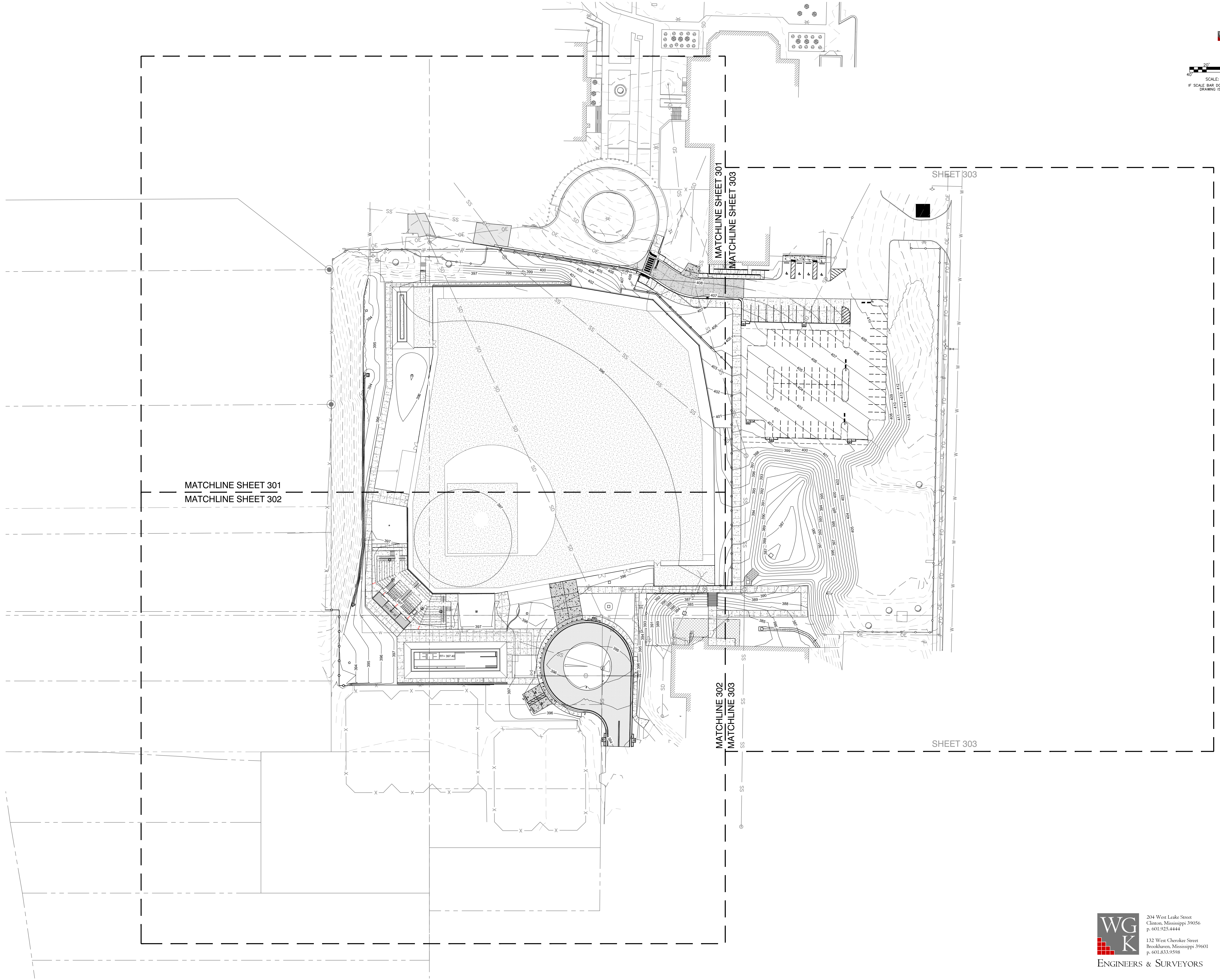
**WG K**  
ENGINEERS & SURVEYORS

204 West Leake Street  
Clinton, Mississippi 39056  
p. 601.925.4444

132 West Cherokee Street  
Brookhaven, Mississippi 39601  
p. 601.833.9598



V:\Dale Partners\2023-24-00-Meridian High School Baseball\_Softball\1\Production Drawings\Federal\300 - Overall Site Plan.dwg 8/10/23 4:11 PM



**DALE  
BAILEY**  
AN ASSOCIATION

Architects  
One Jackson Place 250  
188 East Capitol Street  
Jackson, MS 39201  
p 601.352.5411  
  
201 Park Court Suite B  
Ridgeland, MS 39157  
p 601.790.9432  
  
161 Lameuse St. Suite 201  
Biloxi, MS 39530  
p 228.374.1409  
  
dalebaileyplans.com



**Meridian High School  
Baseball/Softball Re-Bid**  
2320 32nd St, Meridian, MS 39305

**Construction  
Documents**

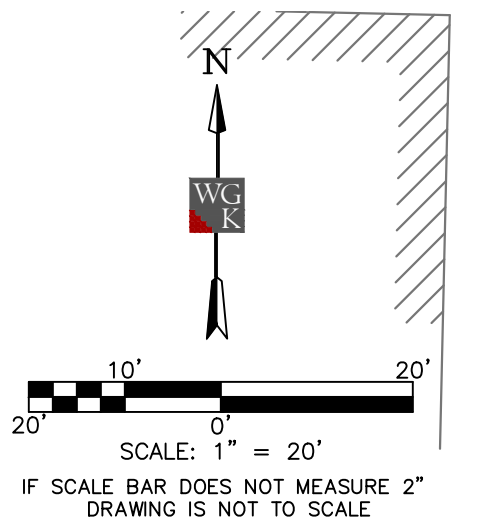
Project No	22034-03
Date	8/10/23
Revisions	Rev Date
Addendum #1	8/10/23

**WG  
K**  
ENGINEERS & SURVEYORS  
204 West Leake Street  
Clinton, Mississippi 39056  
p. 601.925.4444  
132 West Cherokee Street  
Brookhaven, Mississippi 39601  
p. 601.833.9598

**C-300**  
Overall Site Plan



NOTES:  
 1. IF DROP FROM TOP OF RETAINING WALL TO LOWEST GRADE IS 30" OR HIGHER, A GUARD RAIL IS REQUIRED.



**DALE BAILEY**  
 AN ASSOCIATION

Architects  
 One Jackson Place 250  
 188 East Capitol Street  
 Jackson, MS 39201  
 p 601.352.5411  
 201 Park Court Suite B  
 Ridgeland, MS 39157  
 p 601.790.9432  
 161 Lameuse St. Suite 201  
 Biloxi, MS 39530  
 p 228.374.1409  
 dalebaileyplans.com



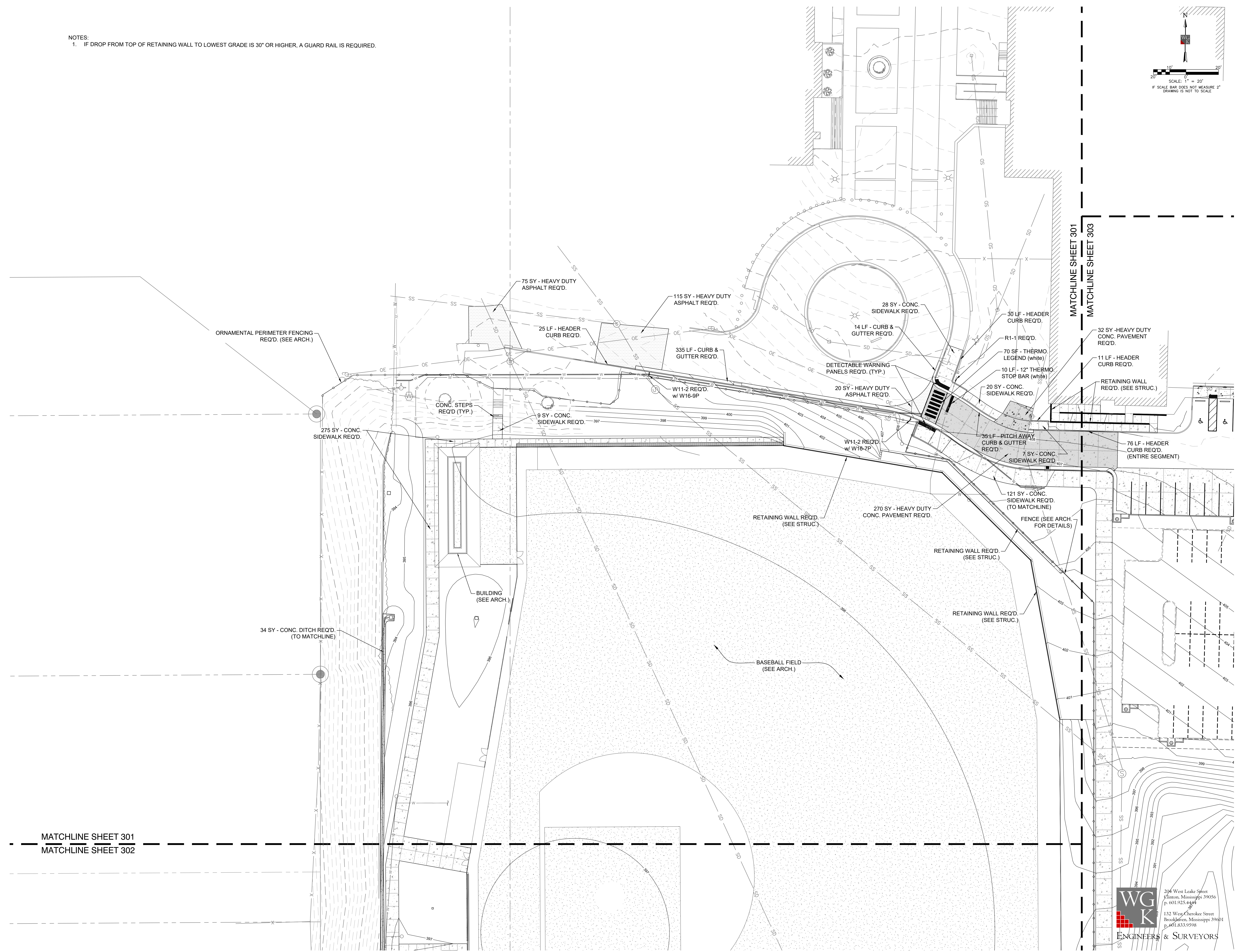
**Meridian High School  
 Baseball/Softball Re-Bid**  
 2320 32nd St, Meridian, MS 39305

Construction Documents

Project No	22034-03
Date	8/10/23
Revisions	Rev Date
Addendum #1	8/10/23

**C-301**  
 Site Plan

V:\Date Partners\2023-349-00 Meridian High School Baseball\_Softball\1\Production Drawings\Federal\C300 - Overall Site Plan.dwg 8/10/2023 4:11 PM



MATCHLINE SHEET 301  
 MATCHLINE SHEET 302

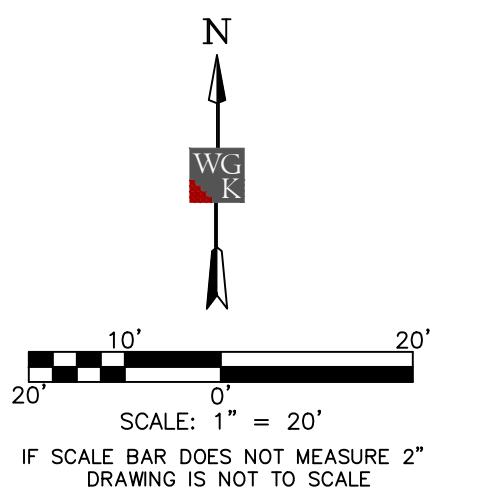
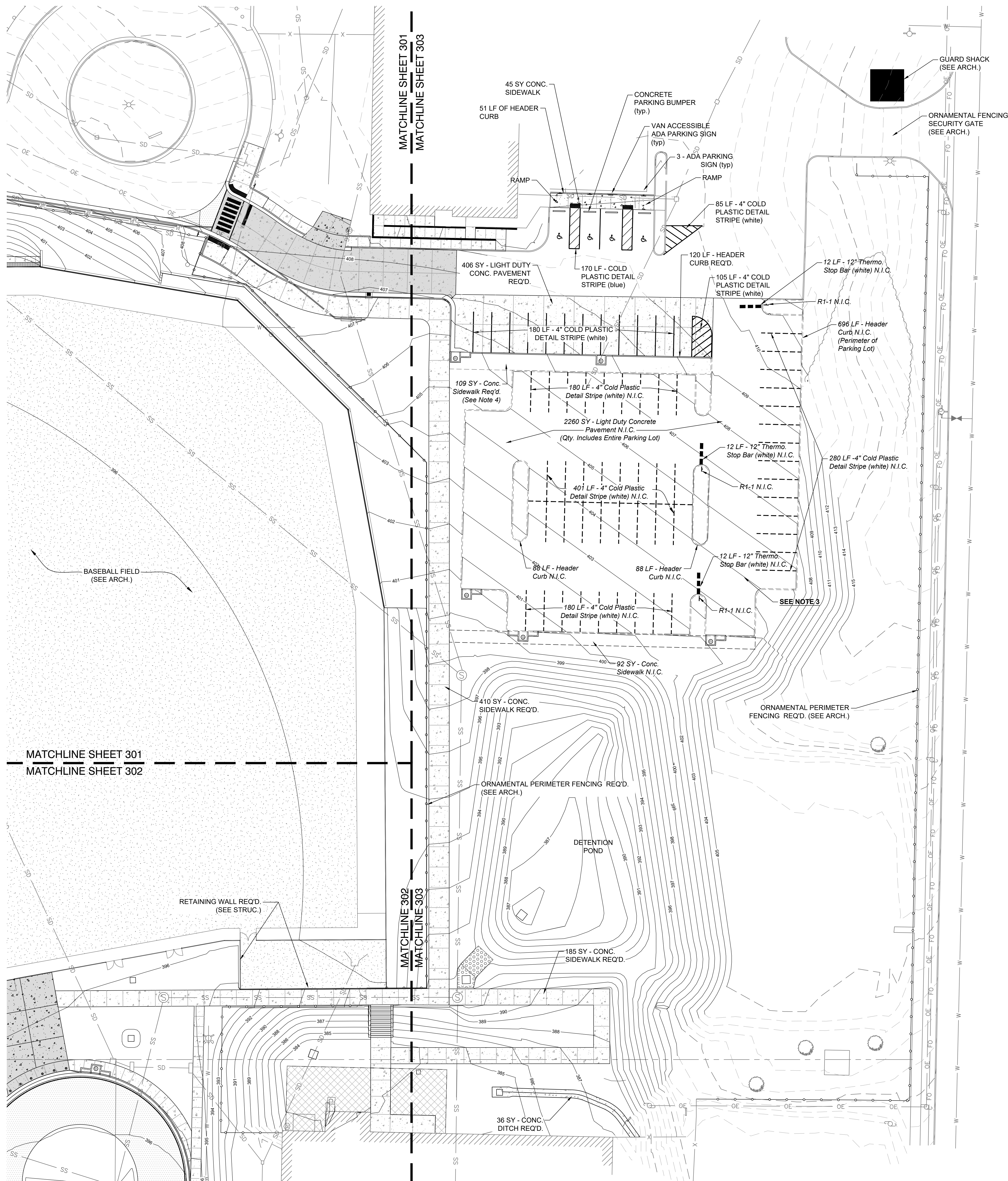
MATCHLINE SHEET 301  
 MATCHLINE SHEET 303

204 West Leake Street  
 Clinton, Mississippi 39056  
 p. 601.925.4444  
 132 West Cherokee Street  
 Brookhaven, Mississippi 39601  
 p. 601.833.9598  
**ENGINEERS & SURVEYORS**









- NOTES:
1. SEE ARCHITECTURAL PLANS FOR ALL HANDRAIL AND GUARDRAIL DETAIL. ALL DROPS OF 30" REQUIRE GUARDRAIL (SEE ARCH.)
  2. SEE STRUCTURAL FOR ALL RETAINING WALL SIZES, REINFORCEMENTS AND BACKFILL REQUIREMENTS.
  3. PARKING LOT AREA SHOWN WITH DASHED LINE TYPES AND ITALICIZED TEXT LEADERS IS NOT TO BE COMPLETED IN THIS CONTRACT. CONTRACTOR TO COMPLETE DIRT SUBGRADE TO WITHIN +/- 1". CONTRACTOR TO PROVIDE AS-BUILT TOPOGRAPHIC SURVEY ON STATE PLANE COORDINATES TO VERIFY DIRT IS WITHIN SPECIFIED TOLERANCE. FINAL DIRT GRADES TO BE OBTAINED BY SUBTRACTING DEPTH OF TYPICAL SECTION 2. SHEET C-801 FROM THE FINAL GRADE POINTS/CONTOURS. THIS WORK IS TO BE COMPLETED BY DECEMBER 29 WITH LIQUIDATED DAMAGES OF \$500/DAY IF NOT COMPLETED.
  4. THIS SPECIFIC CONCRETE SIDEWALK TO BE POURED AFTER THE HEADER CURB FOR THE SOUTHERN CONCRETE PARKING LOT (WHICH IS NOT IN CONTRACT) HAS BEEN INSTALLED.

**DALE BAILEY**  
AN ASSOCIATION

Architects  
One Jackson Place 250  
188 East Capitol Street  
Jackson, MS 39201  
p 601.352.5411  
  
201 Park Court Suite B  
Ridgeland, MS 39157  
p 601.790.9432  
  
161 Lameuse St. Suite 201  
Biloxi, MS 39530  
p 228.374.1409  
  
dalebaileyplans.com



**Meridian High School  
Baseball/Softball Re-Bid**  
2320 32nd St, Meridian, MS 39305

**Construction Documents**

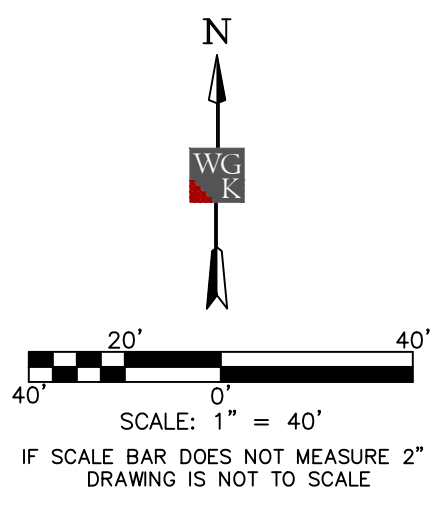
Project No	22034-03
Date	8/10/23
Revisions	Rev Date
Addendum #1	8/10/23

**WG K**  
ENGINEERS & SURVEYORS  
204 West Leake Street  
Clinton, Mississippi 39056  
p. 601.925.4444  
132 West Cherokee Street  
Brookhaven, Mississippi 39601  
p. 601.833.9598

**C-303**  
Site Plan

V:\Date Partners\2023-24\00-Meridian High School Baseball\_Softball\1\Production Drawings\Rebid\C303 - Overall Site Plan.dwg 8/10/2023 4:11 PM





HORIZONTAL ORIENTATION DERIVED FROM GPS OBSERVATIONS AND NAD83(2011) GRID DATA, MISSISSIPPI STATE PLANE EAST ZONE, AND NAVD88 DATUM, HAVING A COMBINED FACTOR OF 0.99995188 AND A CONVERGENCE ANGLE OF (+00°04'11.8731\"), AS SAMPLED AT WGS CONTROL POINT #2, AS SHOWN HEREON.

LOCATION OF UNDERGROUND UTILITIES SHOWN ON THIS PLAN IS APPROXIMATE ONLY, AND IS BASED ON SURFACE EVIDENCE OF SAME, OR INFORMATION PROVIDED BY MS 811 LOCATE SERVICES AND THE SCHOOL. OTHER UNDERGROUND UTILITIES/STRUCTURES MAY EXIST THAT WERE NOT EVIDENT TO SURVEYOR.

**DALE BAILEY**  
AN ASSOCIATION

Architects  
One Jackson Place 250  
188 East Capitol Street  
Jackson, MS 39201  
p 601.352.5411

201 Park Court Suite B  
Ridgeland, MS 39157  
p 601.790.9432

161 Lameuse St. Suite 201  
Biloxi, MS 39530  
p 228.374.1409

dalebaileyplans.com



**Meridian High School  
Baseball/Softball Re-Bid**  
2320 32nd St, Meridian, MS 39305

Construction Documents

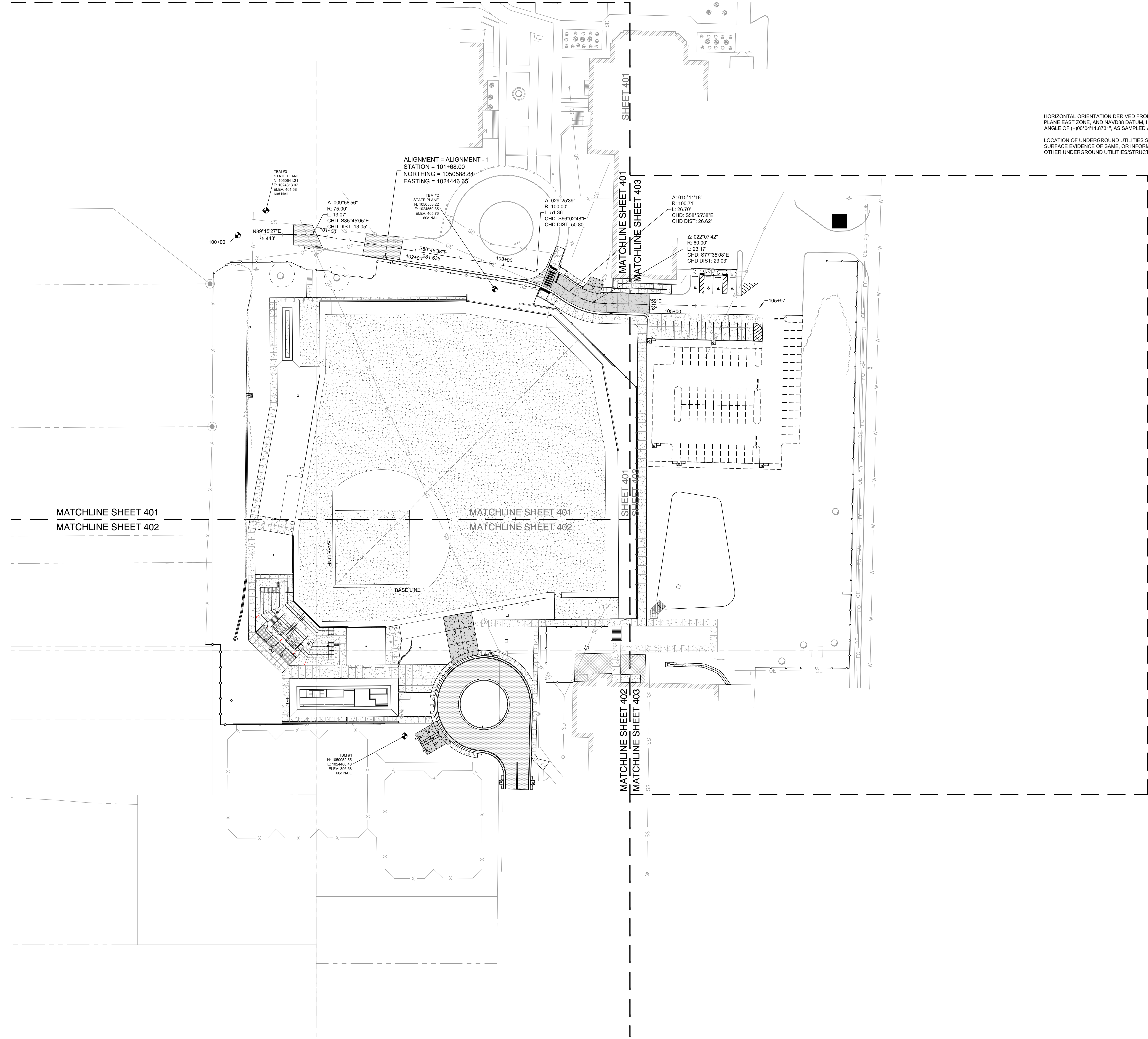
Project No	22034-03
Date	8/10/23
Revisions	Rev Date
Addendum #1	8/10/23

**C-400**  
Overall Geometric Plan

**WG K**  
ENGINEERS & SURVEYORS

204 West Leake Street  
Clinton, Mississippi 39056  
p. 601.925.4444

132 West Cherokee Street  
Brookhaven, Mississippi 39601  
p. 601.833.9598



V:\Dale Partners\2023-24-00-00 Meridian High School Baseball\_Softball\_1\Production Drawings\SheetC-400 - Overall Geometric Plan.dwg 10/20/23 4:11 PM

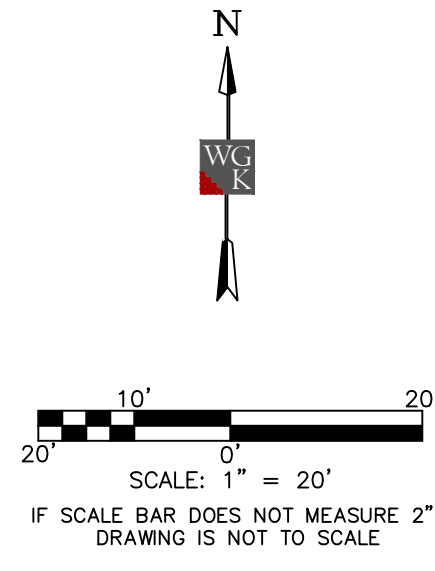






MATCHLINE SHEET 401  
MATCHLINE SHEET 402

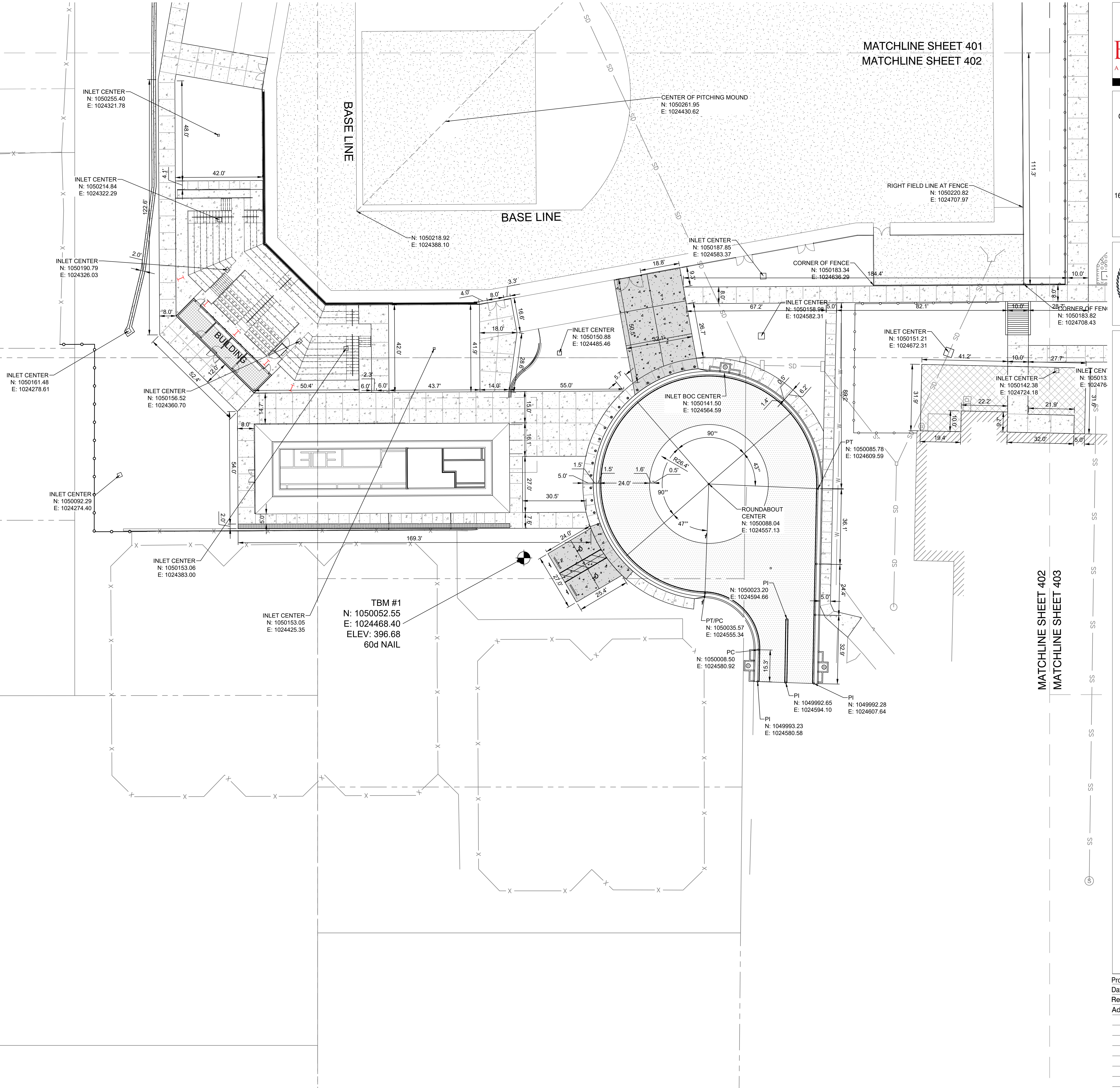
MATCHLINE SHEET 401  
MATCHLINE SHEET 402



HORIZONTAL ORIENTATION DERIVED FROM GPS OBSERVATIONS AND NAD83(2011) GRID DATA, MISSISSIPPI STATE PLANE EAST ZONE, AND NAVD88 DATUM, HAVING A COMBINED FACTOR OF 0.99995186 AND A CONVERGENCE ANGLE OF (+)00°04'11.8731", AS SAMPLED AT W/GK CONTROL POINT #2, AS SHOWN HEREON.

LOCATION OF UNDERGROUND UTILITIES SHOWN ON THIS PLAN IS APPROXIMATE ONLY, AND IS BASED ON SURFACE EVIDENCE OF SAME, OR INFORMATION PROVIDED BY MS 811 LOCATE SERVICES AND THE SCHOOL. OTHER UNDERGROUND UTILITIES/STRUCTURES MAY EXIST THAT WERE NOT EVIDENT TO SURVEYOR.

NOTE:  
CALLOUTS FOR WALL ARE PLACED ON HIGH SIDE OF WALL.  
SEE STRUCTURAL PLANS FOR WALL TABLE.



**Meridian High School  
Baseball/Softball Re-Bid**  
2320 32nd St, Meridian, MS 39305

Construction Documents

Project No	22034-03
Date	8/10/23
Revisions	Rev Date
Addendum #1	8/10/23

V:\Dale Partners\2023-349-00 Meridian High School Baseball\_Softball\_1\Production Drawings\Sheet\C-402 Geometric Plan.dwg 8/10/2023 4:12 PM





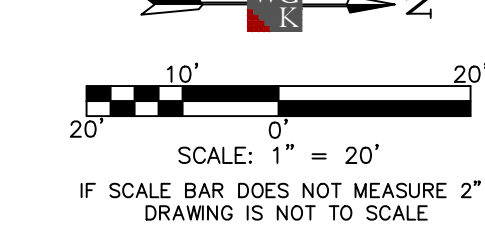
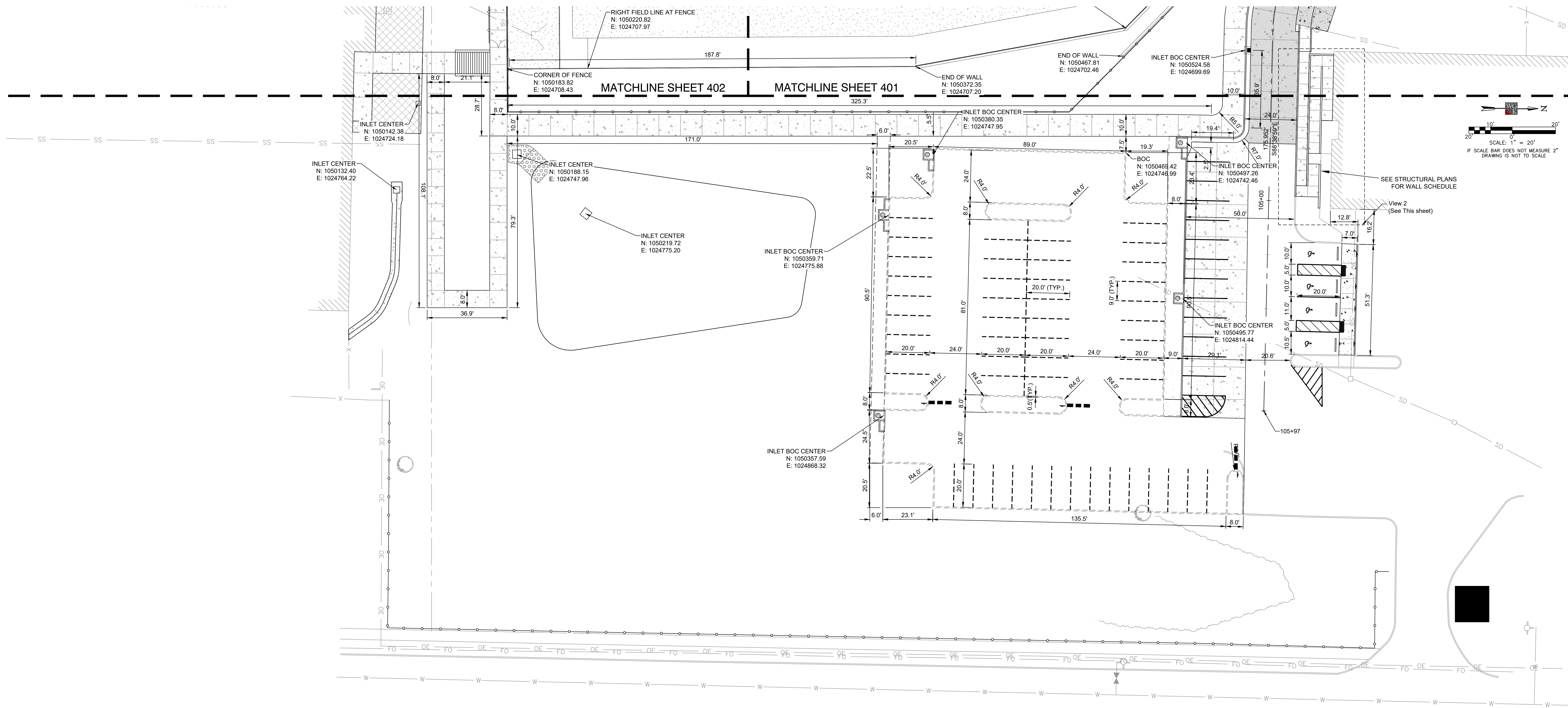
**Meridian High School  
Baseball/Softball Re-Bid**  
2320 32nd St, Meridian, MS 39305

**Construction Documents**

Project No 22034-03  
Date 8/10/23  
Revisions Rev Date  
Addendum #1 8/10/23

**C-403**

Geometric Plan



HORIZONTAL ORIENTATION DERIVED FROM GPS OBSERVATIONS AND NAD83(2011) GRID DATA, MISSISSIPPI STATE PLANE EAST ZONE, AND NAVD88 DATUM, HAVING A COMBINED FACTOR OF 0.99995188 AND A CONVERGENCE ANGLE OF (+00°04'11.8731\"

LOCATION OF UNDERGROUND UTILITIES SHOWN ON THIS PLAN IS APPROXIMATE ONLY, AND IS BASED ON SURFACE EVIDENCE OF SAME, OR INFORMATION PROVIDED BY MS 811 LOCATE SERVICES AND THE SCHOOL. OTHER UNDERGROUND UTILITIES/STRUCTURES MAY EXIST THAT WERE NOT EVIDENT TO SURVEYOR.

**View 2**

